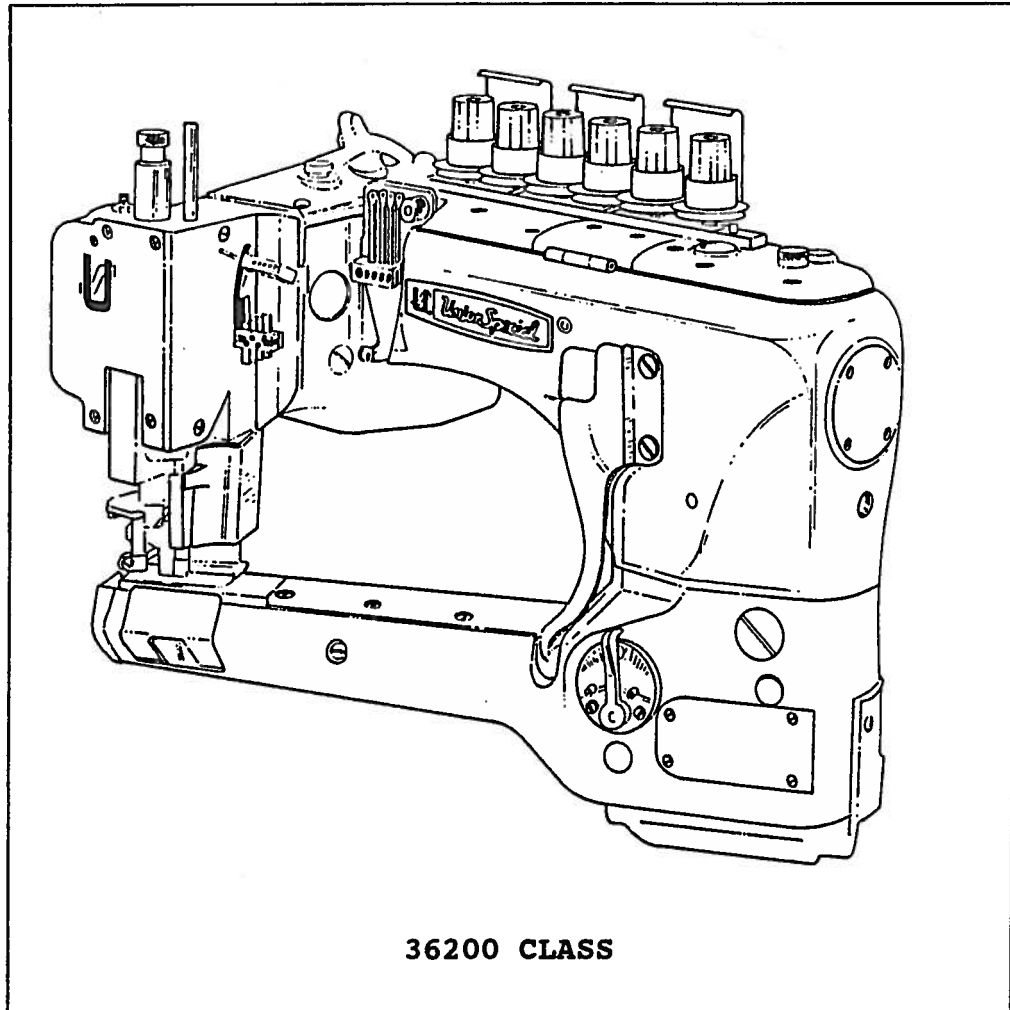


MANUAL NO.
PRT9201

ILLUSTRATED PARTS LIST

STYLES

- 36200 AK
- 36200 PA
- 36200 PH
- 36200 PJ
- 36200 PM
- 36200 PX
- 36200 TA
- 36200 TH
- 36200 TJ
- 36200 TM
- 36200 TX



Union Special
INDUSTRIAL SEWING EQUIPMENT

Manual No. PRT9201
Illustrated Parts List
for the
36200 Series
Styles

36200 AK	36200 TA
36200 PA	36200 TH
33200 PH	36200 TJ
36200 PJ	36200 TM
36200 PM	36200 TX
33200 PX	

First Edition

Copyright 1992

By

Union Special Corporation

Rights Reserved In All Countries

Printed in U.S.A.

March, 1996

PREFACE

This parts manual has been prepared to assist you in locating individual parts or assemblies on the 36200 Series machines. It can be used in conjunction with Union Special Adjusting Manual INS9202.

It is the desire of Union Special that each machine run at its optimum performance. Parts listed in this manual are designed specifically for your machine and are manufactured with utmost precision to assure long lasting service.

This manual has been comprised on the basis of available information. Changes in design and/or improvements may incorporate a slight modification of configuration in illustrations or part numbers.

On the following pages will be found illustrations and terminology used in describing the parts used on the 36200 Series machines.

Este manual se ha hecho con la informaciòn basicá disponible.

Cambios eñdiseno y la mejoras puede incorporar una pequeña modificaciòn, de la configuraciòn en las ilustraciones o numero de partes.

En las siguientes páginas encontrara ilustraciones y treminologia usada en la descripciòn de partes usadas en las máquinas Serie 36200.

Dieses Handbuch wurde auf Basis vorhandener Information erstellt. Konstruktionsänderungen und/oder Weiterentwicklungen können eine geringfügige Veränderung der Abbildungen oder der Teilenummern bedingen.

Auf den folgenden Seiten finden Sie die Abbildungen und die technischen Beschreibungen der Teile, die in den Maschinen der Baureihe 36200 verwendet warden.

SAFETY RULES

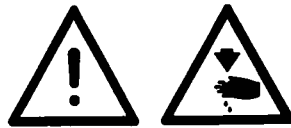
1. Before putting the machines described in this manual into service, carefully read the instructions. The starting of each machine is only permitted after taking notice of the instructions and by qualified operators.

IMPORTANT! Before putting the machine into service, also read the safety rules and instructions from the motor supplier.

2. Observe the national safety rules valid for your country.
3. The sewing machines described in this instruction manual are prohibited from being put into service until it has been ascertained that the sewing units which these sewing machines will be built into, have conformed with the EC Council Directives (89/392/EEC, Annex II B).

Each machine is only allowed to be used as foreseen. The foreseen use of the particular machine is described in paragraph "STYLES OF MACHINES" of this instruction manual. Another use, going beyond the description, is not as foreseen.

4. All safety devices must be in position when the machine is ready for work or in operation. Operation of the machine without the appertaining safety devices is prohibited.
5. Wear safety glasses.
6. In case of machine conversions and changes all valid safety rules must be considered. Conversions and changes are made at your own risk.
7. The warning hints in the instructions are marked with one of these two symbols:



8. When doing the following the machine has to be disconnected from the power supply by turning off the main switch or by pulling out the main plug:
 - 8.1 When threading needle(s), looper, spreader etc.
 - 8.2 When replacing any parts such as needle(s), presser foot, throat plate, looper, spreader, feed dog, needle guard, folder, fabric guide etc.
 - 8.3 When leaving the workplace and when the workplace is unattended.
 - 8.4 When doing maintenance work.
 - 8.5 When using clutch motors without actuation lock, wait until the motor is stopped totally.
9. Maintenance, repair and conversion work (see item 8) must be done only by trained technicians or special skilled personnel under consideration of the instructions.
10. Any work on the electrical equipment must be done by an electrician or under direction and supervision of special skilled personnel.
11. Work on parts and equipment under electrical power is not permitted. Permissible exceptions are described in the applicable sections of standard sheet DIN VDE 0105.
12. Before doing maintenance and repair work on the pneumatic equipment, the machine has to be disconnected from the compressed air supply. In case of existing residual air pressure, after disconnecting from compressed air supply (i.e. pneumatic equipment with air tank), the pressure has to be removed by bleeding.

CONTENTS

1.	Ordering Repair Parts	6
	Illustrations	6
	Identifying Parts	6
	Needles	7
	Terms	7
2.	Torque Requirements	8
3.	Oil Sight Gauges, Top Covers & Miscellaneous Take-up & Eyelet Parts	11
4.	Main Frame, Bushings & Miscellaneous Eyelet & Cover Parts ..	13
5.	Main Shaft Parts & Miscellaneous Oiling	15
6.	Crankshaft & Needle Lever Parts	17
7.	Foot Lifter & Tension Parts	19
8.	Detachable Head, Head Covers, Needle Bar & Needle Bar Head	21
9.	Differential & Main Feed Bars, Feed Dogs & Feed Lift Eccentric Assembly	23
10.	Feed Drive Assembly, Feed Rocker & Looper Avoid Parts	25
11.	Knife Driving Parts	27
12.	Looper Rocker Shaft & Looper Rocker Drive Parts	29
13.	Lap Former, Miscellaneous Cylinder Covers, Throat Plates & Chain Cutting Knife	31
14.	Cylinder Bushings, Differential Feed Control Assembly & Miscellaneous Cylinder Covers	33
15.	Presser Feet	35
16.	Presser Feet	37
17.	Presser Foot Shoes	39
18.	Thread Stand	41
19.	Miscellaneous Gauges & Tape Reel Parts	43
20.	Drive Unit, Belt Guard & Table Mounting Parts	45
21.	Numerical Index of Parts	46

ORDERING REPAIR PARTS

ILLUSTRATIONS

This manual has been arranged to simplify ordering repair parts. Exploded views of various sections of the mechanism are shown so that the parts may be seen in their actual position in the machine. On the page opposite the illustration will be found a listing of the parts with their part numbers, description and the number of pieces required in the particular view being shown.

Numbers in the first column are reference numbers only, and merely indicate the position of the part in the illustration. The reference number should never be used in ordering parts. Always use the part number listed in the second column.

Component parts of sub-assemblies which can be furnished for repairs are indicated by indenting their descriptions under the description of the main sub-assembly. As an example refer to the illustration on page 28 and the text below.

20	29478CU	Looper Drive Connecting Rod Assembly	1
21	35851L	Ball Joint, upper	1
22	22729C	Screw	2
23	269	Nut, left thread	1
24	4761	Connecting Rod	1
25	18	Nut, right thread	1
26	39145A	Ball Joint, lower	1
27	22727C	Screw	2

It will be noted in the above example that the ball studs are not listed. The reason is that replacement of these parts individually is not recommended, so the complete upper ball joint and lower ball joint sub-assemblies should be ordered.

When a part is common to all machines covered in this manual, no specific usage will be mentioned in the description. However, when the parts for the various machines are not the same, the specific usage will be mentioned in the description and, if necessary, the difference will be shown in the illustration.

A numerical index of all the parts shown in this manual is located at the back. This will facilitate locating the illustration and description when only a part number is known.

IDENTIFYING PARTS

Where the construction permits, each part is stamped with its part number. On some of the smaller parts and on those where construction does not permit, an identification letter is stamped in to distinguish the part from similar ones.

PLEASE NOTE: Part numbers represent the same part, regardless of which manual they appear. On all orders please include part number, name and Style of machine for which the part was ordered.

NEEDLES

Each needle has both a Type and Size number. The Type number denotes the kind of shank, point, length, groove, finish and other details. The Size number, stamped on the needle shank, denotes the largest diameter of the blade measured between the shank and the eye. Collectively, the Type number and Size number represent the complete symbol which is given on the label of all needles packed and sold by Union Special.

<u>TYPE</u>	<u>DESCRIPTION</u>
118GAS	Extra short, double groove, struck groove, .060" diameter shank, chromium plated needle. Sizes available 065/025, 070/027, 075/029, 080/032, 090/036.
118GBS	Extra short, single groove, struck groove, spotted, .060" diameter shank, chromium plated needle. Sizes available 075/029, 080/032.
118GHS	Same as Type 118GBS, except with ball point. Sizes available 070/027, 075/029, 080/032.
118GJS	Same as Type 118GHS, except with tapered blade and ball point. Sizes available 065/025, 070/027, 075/029.
118GKS	Round shank, round point, extra short, double groove, struck groove, spotted, chromium plated needle. Sizes available 070/027, 075/029, 080/032.
36211	Retainer needle, no scarf, chromium plated. Sizes available 065/025, 070/027, 075/029.

APPLICATION

118GKS	75/029	Recommended for Styles 36200AK, PA, PH, PJ, PM, TA, TH, TJ, TM
118GKS	80/032	Recommended for Styles 36200PX, TX

When changing the needle, make sure it is fully inserted in the needle head before the clamp screw is tightened.

To have needles promptly and accurately filled, an empty package, a needle sample, or the Type and Size number should be forwarded. Use the description on the label. A complete order should read as follows: "100 needles, Type 118GKS, Size 075/029".

TERMS

Prices are net cash and subject to change without notice. All shipments are forwarded F.O.B. shipping point. A charge is made to cover postage and insurance.

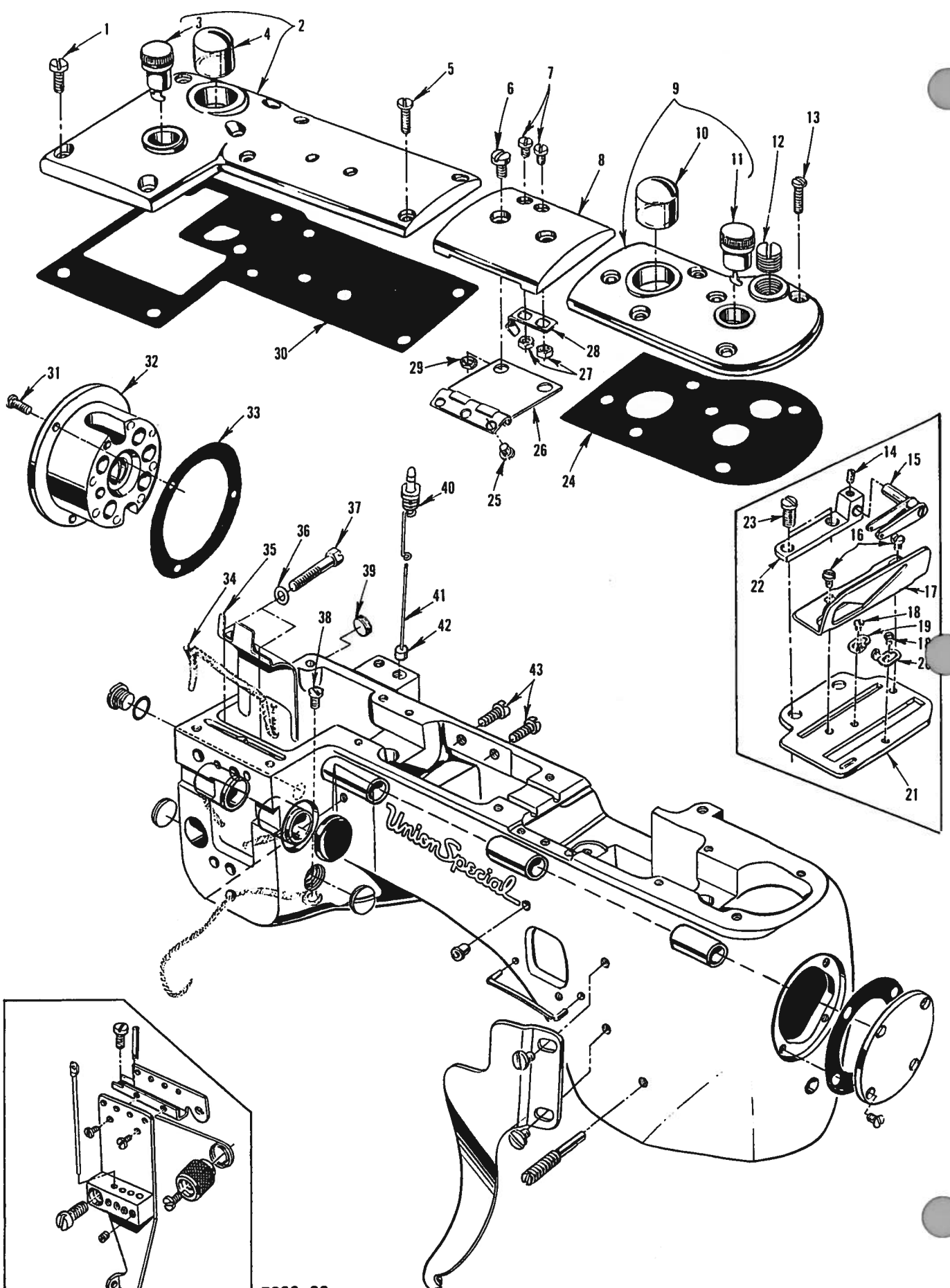
TORQUE REQUIREMENTS

Torque (measured in inch-pounds) is a rotating force in pounds applied through a distance by a lever (in inches or feet). This is accomplished by a wrench, screwdriver, etc. Many of these devices are available, which when set at the proper amount of torque will tighten the part to the correct amount and no tighter.

All straps and eccentrics should be tightened to 19-21 inch-pounds (22-24cm/kg) unless otherwise noted. All other nuts, bolts, screws, etc. should be tightened by hand as tightly as possible, unless otherwise noted.

Screws requiring a specific torque will be indicated on the illustrations.

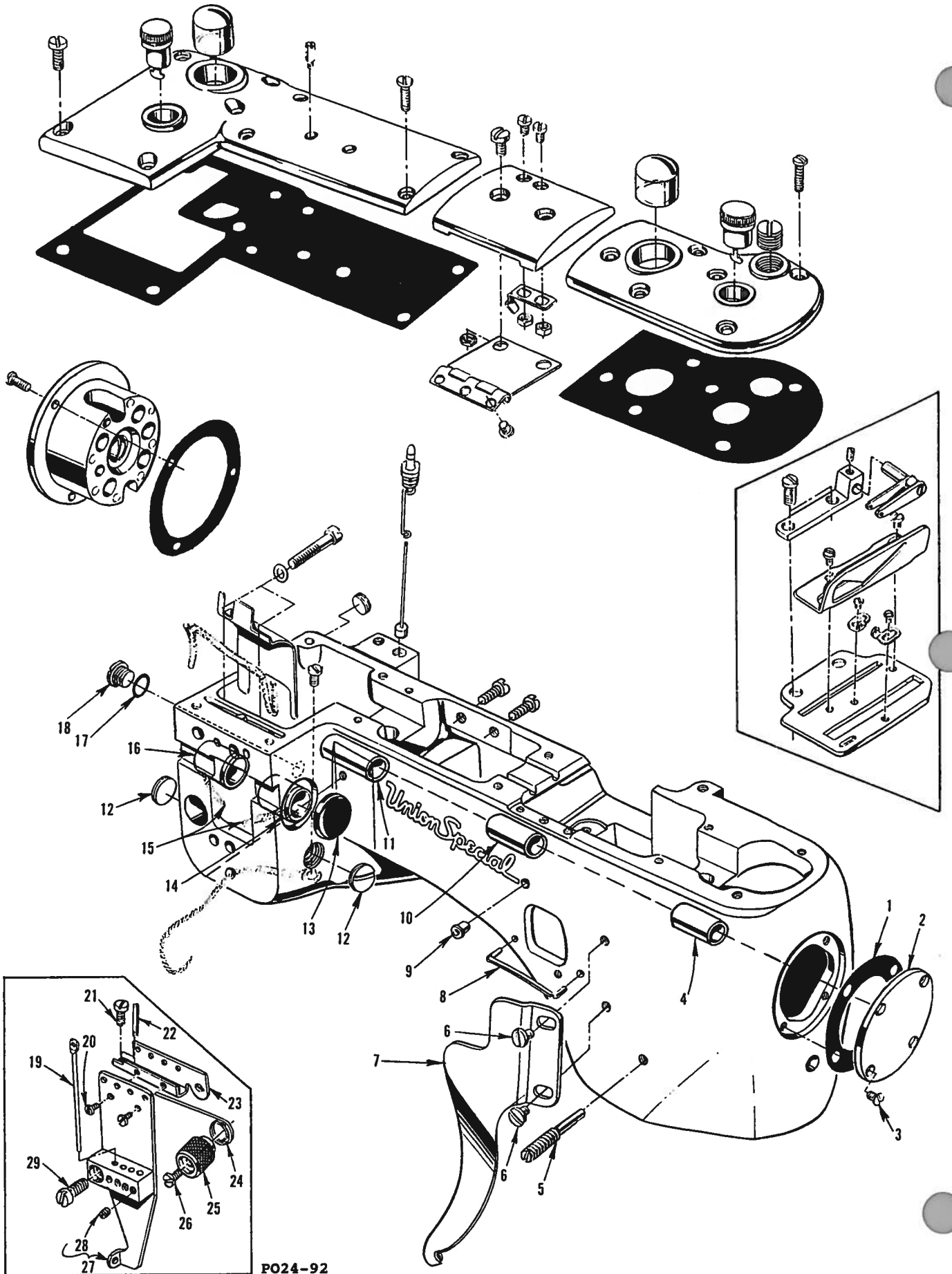
**EXPLODED VIEWS
AND
DESCRIPTION OF PARTS**



F023-92

OIL SIGHT GAUGES, TOP COVERS & MISCELLANEOUS TAKE-UP & EYELET PARTS

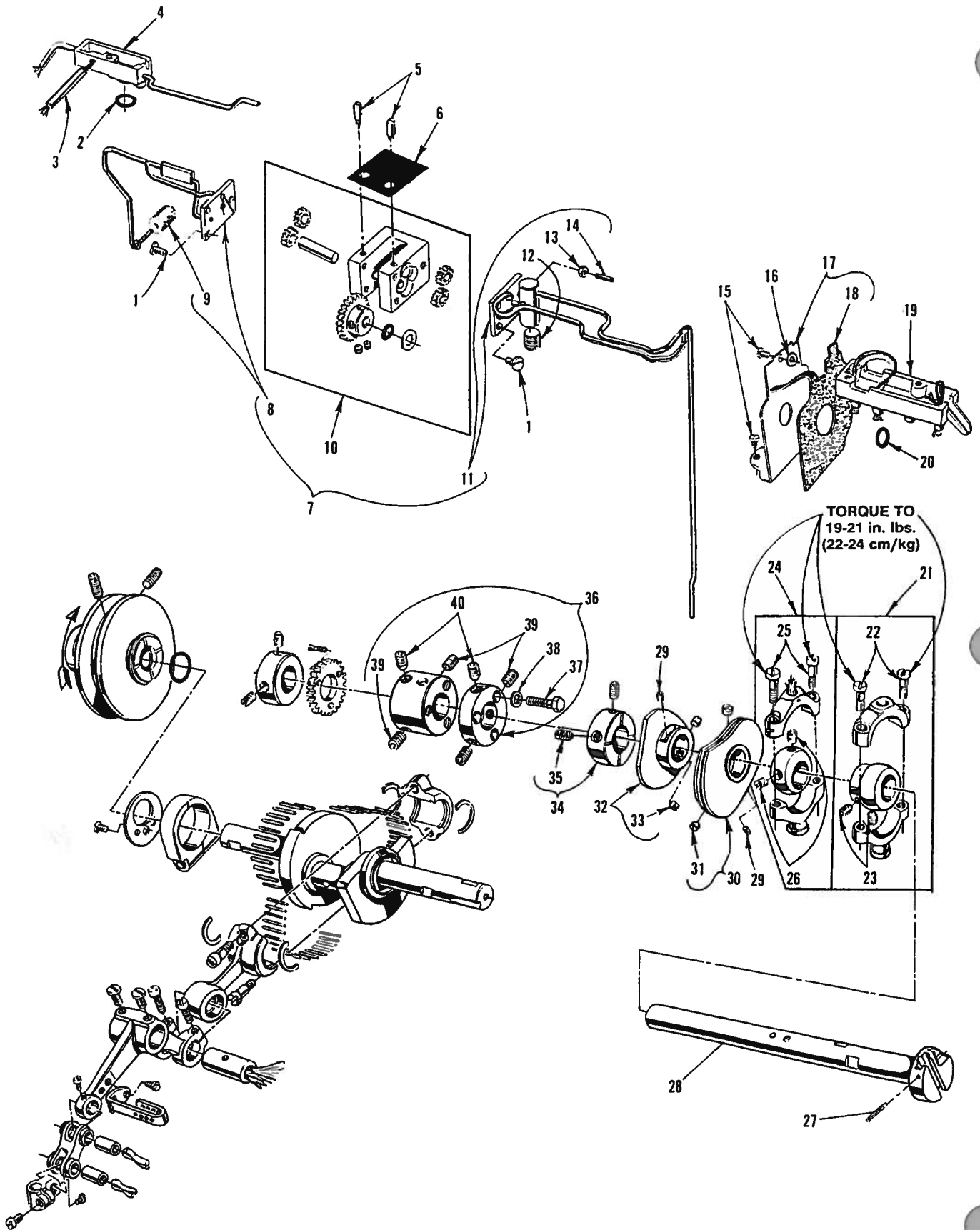
Ref. No.	Part No.	Description	Amt. Req.
1	93	Screw, crank chamber cover	5
2	35888 N	Crank Chamber Cover	1
3	666-96	Oil Cup	1
4	50-537 BLK	Oil Sight Gauge	1
5	22516 A	Screw	4
6	93 A	Screw, middle top cover	2
7	90	Screw, spring	2
8	35887 X	Top Cover, middle	1
9	35887 AE	Top Cover, front	1
10	50-537 BLK	Oil Sight Gauge	1
11	666-96	Oil Cup	1
12	22539 M	Plug Screw	1
13	22516 A	Screw, front top cover	6
14	73 C	Screw	1
15	36256	Cover Thread Take-up Eyelet	1
16	22 KH	Screw, cast-off	2
17	36204	Cast-off	1
18	73 A	Screw, cast-off plate eyelets	2
19	52958 F	Cast-off Plate Eyelet, rear	1
20	52958 C	Cast-off Plate Eyelet, front	1
21	36204 A	Cast-off Plate	1
22	36256 A	Cover Thread Take-up Eyelet Holder	1
23	22839	Screw	2
24	35887 AD	Gasket, front top cover	1
25	22564 B	Screw, middle cover hinge	3
26	35887 R	Middle Cover Hinge	1
27	41071 G	Nut, top middle cover spring screw (90)	2
28	35887 M	Spring, Middle top cover	1
29	12934 A	Nut, top middle cover spring screw (93A)	2
30	35888 R	Gasket, crank chamber	1
31	22569 B	Screw, bushing housing	1
32	36290	Bushing Housing, includes bushing	1
33	56390 E	Gasket, bushing housing	1
34	CL21	Oil Wick	1
35	35889 H	Oil Shield	1
36	6042 A	Washer, for 22759 A	2
37	22759 A	Screw, for connecting head to main frame	2
38	22711	Screw, for oil wick	1
39	22539 G	Plug Screw	1
40	36293 B	Oil Sight Gauge	1
41	36293 E	Oil Level Indicator	1
42	39593 C	Oil Gauge Float	1
43	93	Screw, oil pump housing	2



PO24-92

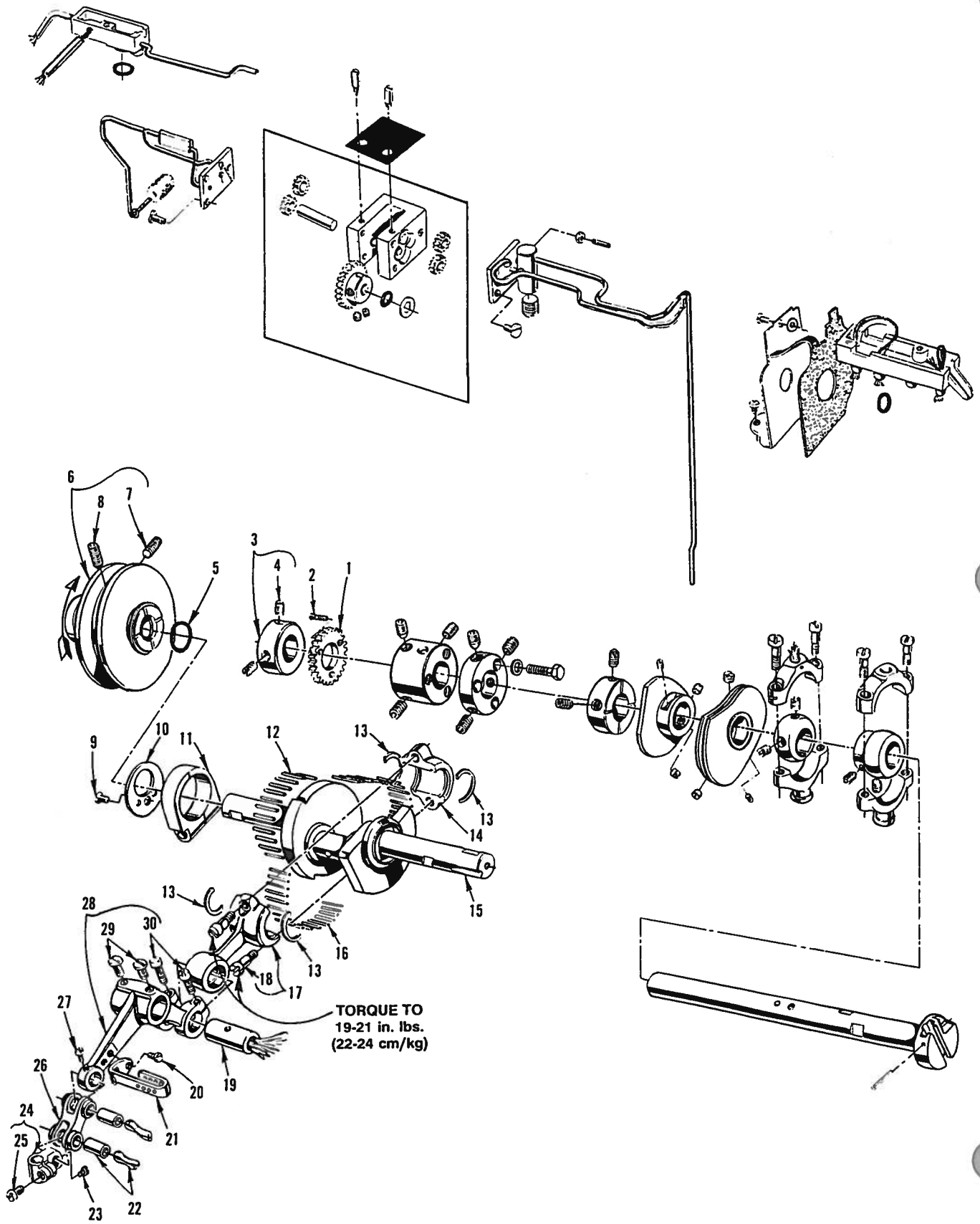
MAIN FRAME, BUSHINGS & MISCELLANEOUS EYELET & COVER PARTS

Ref. No.	Part No.	Description	Amt. Req.
1	35887 V	Gasket, end cover	1
2	35887 Z	End Cover	1
3	22564 B	Screw, end cover	4
4	36290 B	Main Shaft Bushing, front	1
5	22791 D	Screw, for 36253B looper drive lever shaft	1
6	22829	Screw, looper thread shield	2
7	36281 A	Looper Thread Shield	1
8	35781 D	Looper Thread Guide Wire	1
9	62271 B	Thread Guide	1
10	36290 A	Main Shaft Bushing, rear	1
11	35890 E	Crankshaft Bushing, front	1
12	22539 T	Plug Screw	2
13	35761 D	Bushing Cap	1
14	35760 D	Needle Lever Shaft Bushing, front	1
15	CL21	Oil Wick	1
16	36260	Needle Lever Shaft Bushing, rear	1
17	660-206	Rubber "O" Ring	1
18	22733 B	Oil Drain Screw	1
19	36271 A	Frame Needle Thread Eyelet	4
20	73 A	Screw, needle thread eyelet	2
21	22768 B	Screw, unlocking spring height adjusting	1
22	22799 B	Screw	1
23	36271 G	Stitch Unlocker Mounting Bracket	1
24	36271 E	Unlocking Spring	1
25	36271 H	Spring Holder	1
26	22593	Screw	1
27	36271	Needle Thread Eyelet	1
28	28 C	Screw	4
29	22569 D	Screw, needle thread eyelet	1



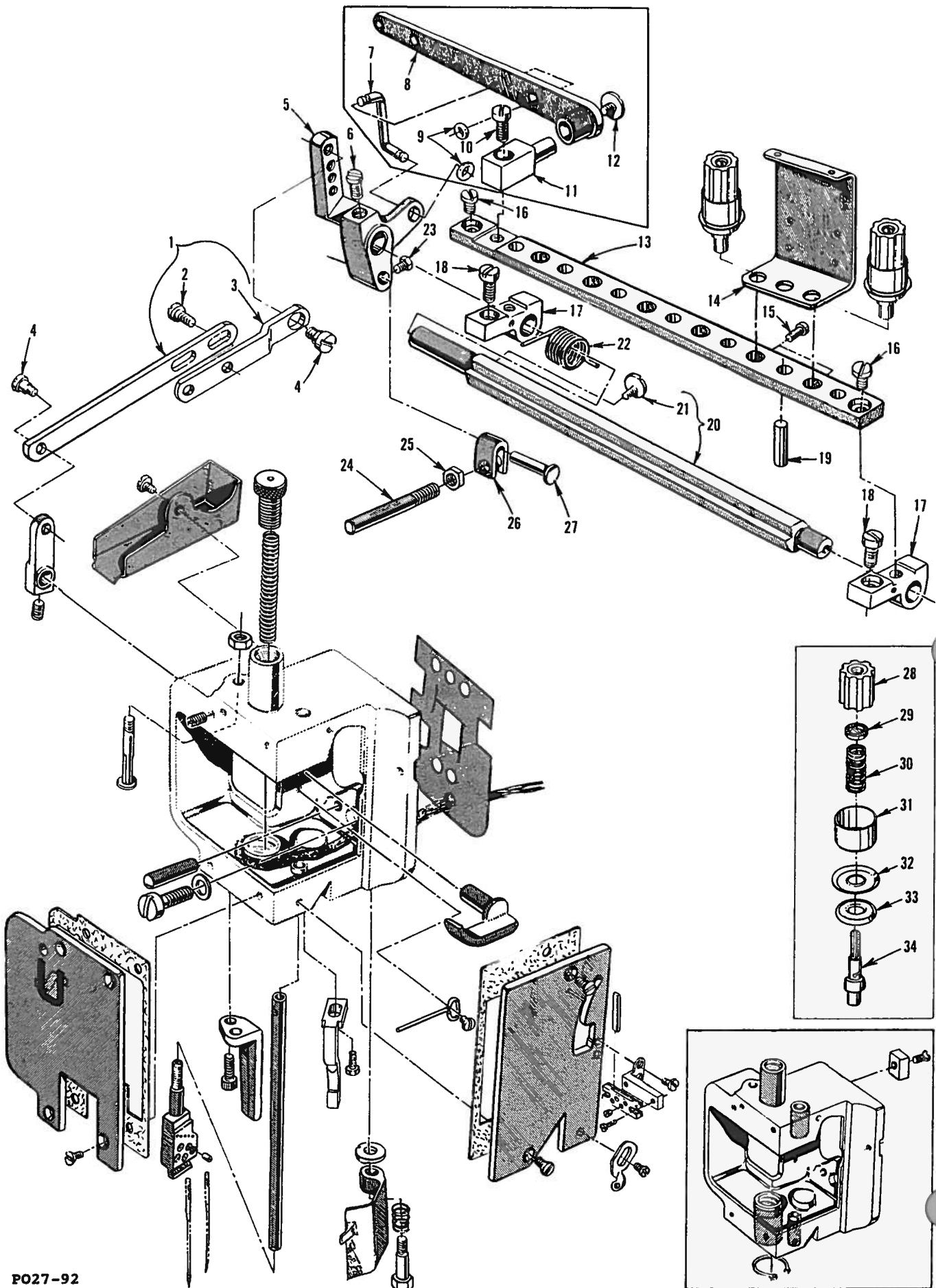
MAIN SHAFT PARTS & MISCELLANEOUS OILING

Ref. No.	Part No.	Description	Amt. Req.
1	22585 A	Screw, housing cover	5
2	660-207	Oil Seal Ring	1
3	35897 BU	Reservoir Outlet Tube	1
4	35894 J	Oil Reservoir, back	1
5	21756 G	Vent Screw	2
6	35897 BW	Gasket	1
7	29472 Y	Pump Assembly	1
8	36297 J	Housing Cover and Oil Tube, rear	1
9	35897 BV	Intake Filter	1
10	29472 AC	Pump Body and Gear Assembly	1
11	36297 M	Housing Cover and Oil Tube, front	1
12	22571 B	Plug Screw	1
13	41071 G	Nut	1
14	22565 A	Screw	1
15	90	Screw, take-up shield	2
16	80265	Spacer Washer	1
17	36261 A	Take-up Shield Assembly	1
18	35861 D	Gasket	1
19	35894 L	Oil Reservoir, front	1
20	660-202	Oil Seal Ring	1
21	29101 J	Feed Drive Eccentric Assembly	1
22	22587 E	Screw	2
23	22894 W	Set Screw	2
24	29103 T	Feed Lift Eccentric Assembly	1
25	22587 E	Screw	2
26	22894 W	Set Screw	2
27	660-219 P	Roll Pin	1
28	36222 C	Main Shaft	1
29	22801	Screw	2
30	36223	Double Disc Take-up	1
31	22580	Screw	2
32	36223 A	Cover Thread Take-up	1
33	22580	Screw	2
34	35895 Y	Crankshaft Thrust Collar	1
35	22894 AM	Screw	2
36	35895 X	Main Shaft Coupling	1
37	22519 F	Screw	3
38	80265	Washer	3
39	22894 J	Set Screw	4
40	22894 K	Spot Screw	2



CRANKSHAFT & NEEDLE LEVER PARTS

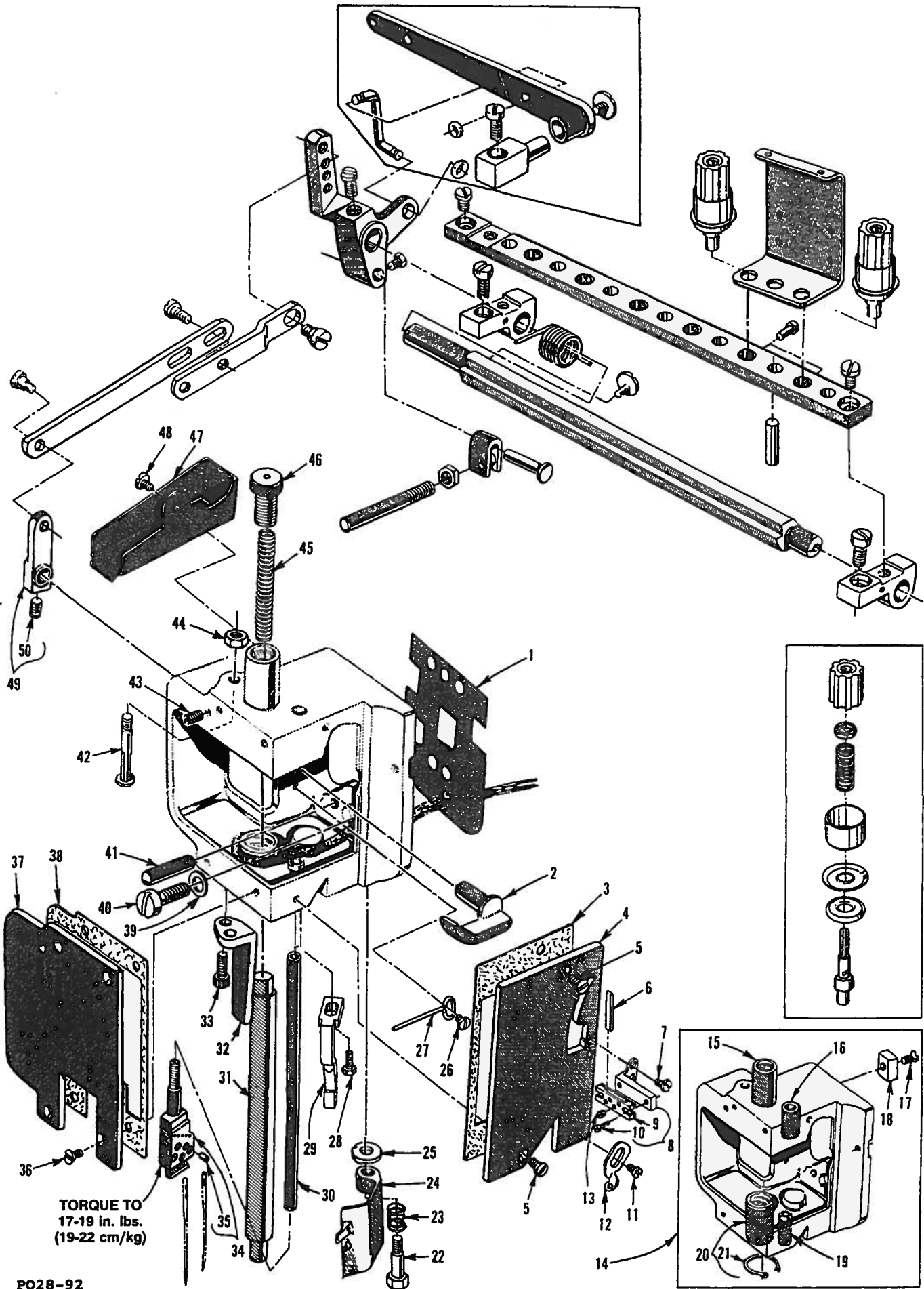
Ref. No.	Part No.	Description	Amt. Req.
1	35897 BY	Pump Driving Gear	1
2	22797	Screw	3
3	35895 Y	Crankshaft Thrust Collar	1
4	22894 AM	Screw	2
5	660-202	Oil Seal Ring	1
6	36221 B	Adjustable Pulley, Styles 36200 TA, TH, TJ, TM	1
-	36221 C	Pulley, Styles 36200 AK, TX, PA, PH, PJ, PM, PX .	1
7	22650 AE-4	Screw, for 36221B adjustable pulley	2
-	22894 E	Set Screw, for 36221C pulley	1
8	22894 X	Screw, for 36221B adjustable pulley	2
-	22894 H	Spot Screw, for 36221C pulley	1
9	22766	Screw	2
10	36251 N	Needle Bearing Retaining Plate	1
11	36251 M	Eccentric Bearing	1
12	36263	Needle Bearing Rollers	28
13	35763 G	Needle Bearing Retaining Ring	4
14	35862	Needle Lever Connecting Rod	1
15	36222 A	Crankshaft	1
16	35763 F	Needle Bearing Rollers	28
17	35862	Needle Lever Connecting Rod	1
18	22587 B	Screw	2
19	35763	Needle Lever Connecting Rod Pin	1
20	77	Screw	2
21	36264 D	Needle Lever Thread Eyelet	1
22	51054	Link Pin	2
23	22564	Screw	1
24	51254 J	Needle Bar Connection	1
25	22562 A	Screw	1
26	56354 A	Needle Bar Link	1
27	77	Screw	1
28	35815 A	Needle Lever	1
29	22569 D	Screw	2
30	22729	Screw	2



FOOT LIFTER & TENSION PARTS

Ref. No.	Part No.	Description	Amt. Req.
1	36280 V	Lifter Lever Link Assembly	1
2	22585 C	Screw	2
3	36280 U	Lifter Lever Link	1
4	86	Screw	2
5	36280 W	Presser Bar Lifter Lever	1
6	22839 D	Screw	1
*	7	36280 T Lifter Lever Connecting Link	1
*	8	36280 S Presser Foot Connection Lifter Lever	1
*	9	660-254 C Retaining Ring	2
*	10	22517 Screw, presser foot lifter bearing bracket ...	1
*	11	36280 N Presser Foot Lifter Bearing Bracket	1
*	12	255 Screw	1
	13	36298 F Tension Support	1
	14	36298 G Tension Thread Eyelet	3
	15	22652 A Screw, tension post	6
	16	94 Screw, tension support	2
	17	36292 M Tension Plate Bracket	2
	18	22517 Screw, tension plate bracket	2
	19	35792 T Tension Disc Release Pin	7
	20	36292 N Tension Release Shaft	1
	21	22784 F Screw	1
	22	36292 K Spring, tension release shaft	1
	23	22519 Screw, stop plunger segment pin	1
	24	36280 A Presser Foot Lifter Stop Plunger	1
	25	258 A Nut	1
	26	36280 C Stop Plunger Segment	1
	27	36280 D Stop Plunger Segment Pin	1
	28	C50092 S Tension Nut	6
	29	39592 AK Tension Spring Ferrule	6
	30	51292 F-2 Tension Spring, cover thread	1
	-	51292 F-4 Tension Spring, looper thread	1
	-	51292 F-5 Tension Spring, needle thread	4
	31	56392 F Shield, tension spring	6
	32	35792 Tension Disc, large	6
	33	109 Tension Disc, small	6
	34	36292 P Tension Post	6

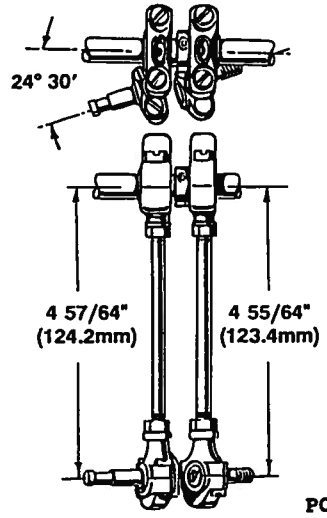
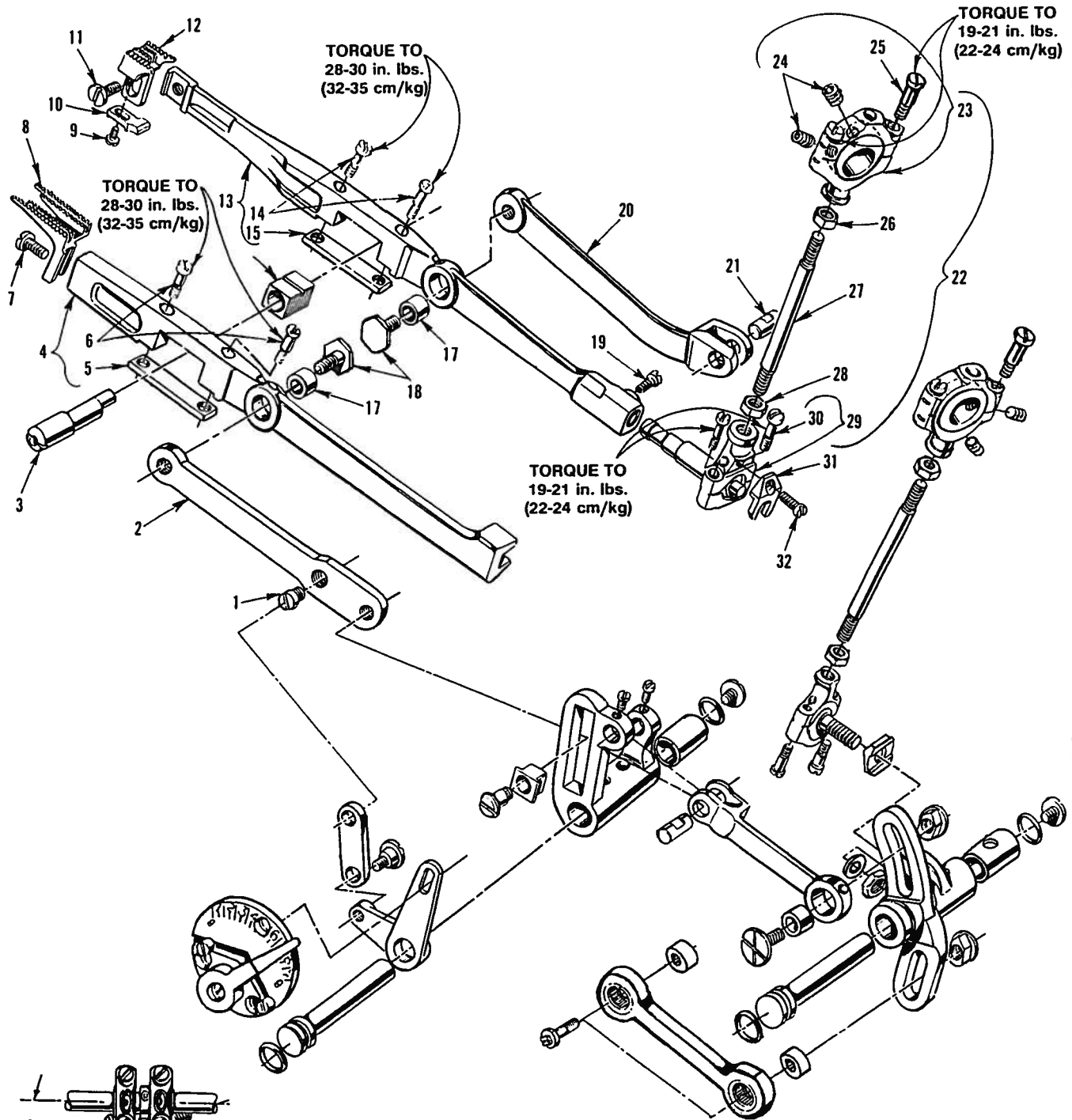
* Available on Styles 36200 TA, TH, TJ, TM and TX only.



PO28-92

DETACHABLE HEAD, HEAD COVERS, NEEDLE BAR & NEEDLE BAR HEAD

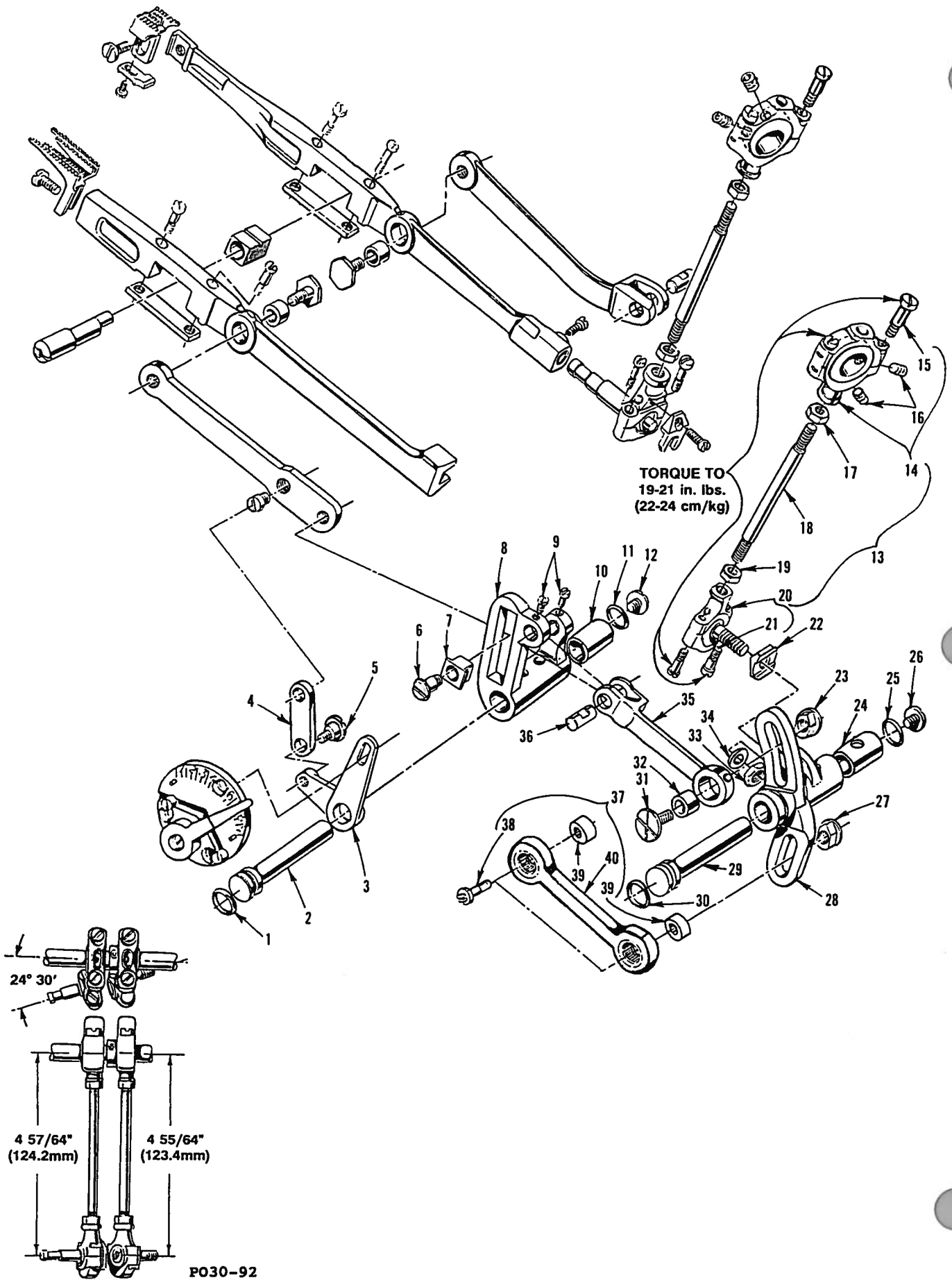
Ref. No.	Part No.	Description	Amt. Req.
1	36289	B Baffle Plate	1
2	36280	J Presser Bar Lifter Lever	1
3	36289	E Gasket, front head cover	1
4	36289	Head Cover, front	1
5	22524	Screw, front head cover	2
6	36264	B Needle Thread Strike-off Pin	4
7	28	Screw, for needle thread take-up	2
8	36264	E Needle Thread Take-up, complete	1
9	36264	F Strike-off Pin Holder	1
10	22738	C Screw, needle thread take-up	2
11	28	Screw, for cover thread eyelet	1
12	51259	Cover Thread Eyelet, all styles except 36200 PX, TX	1
13	28	A Screw, needle thread take-up	4
14	36229	B Detachable Sewing Head	1
15	36278	A Presser Bar Bushing	1
16	35859	D Needle Bar Bushing, upper	1
17	22524	Screw	2
18	35767	Sewing Head Key	2
19	35859	J Needle Bar Bushing, lower	1
20	36251	D Cover Thread Carrier and Hook Driving Sleeve Bushing	1
21	660-261	Retaining Ring	1
22	22777	B Screw, frame chip guard	1
23	36279	B Spring, frame chip guard	1
24	36279	E Frame Chip Guard, Styles 36200 PX, TX	1
-	36279	G Frame Chip Guard, Styles 36200 AK	1
-	36279	J Frame Chip Guard, Styles 36200 PA, PH, PJ, PM, TA, TH, TJ, TM	1
25	36279	A Washer, frame chip guard	1
26	22513	Screw, oil deflector	1
27	36294	C Oil Deflector	1
28	22881	A Screw, right presser foot guide	1
29	36278	K Presser Foot Guide, right	1
30	35817	E Needle Bar	1
31	36278	Presser Bar	1
32	36278	L Presser Foot Guide, left	1
33	22653	B-3 Screw, left presser foot guide	2
34	36218	Needle Head, all Styles except 35200 PJ, PM, TJ, TM	1
-	36218	J Needle Head, Styles 36200 PJ, PM, TJ, TM only	1
35	22738	H Screw, for needles and retainer	5
36	22524	Screw, left head cover	4
37	36289	A Head Cover, left	1
38	36289	D Gasket, left head cover	1
39	6042	A Washer	1
40	318	Screw, for connecting head to main frame	1
41	664	F-16 Taper Pin	1
42	36278	H Presser Bar Guide Stud	1
43	22560	A Screw, presser bar guide stud	1
44	12538	Nut, presser bar guide stud	1
45	36278	F Spring, presser bar	1
46	36278	M Presser Bar Regulating Screw	1
47	36294	B Oil Guard	1
48	22585	C Screw, oil guard	1
49	35880	M Lifter Lever Link Connection	1
50	22894	J Screw	1



PO29-92

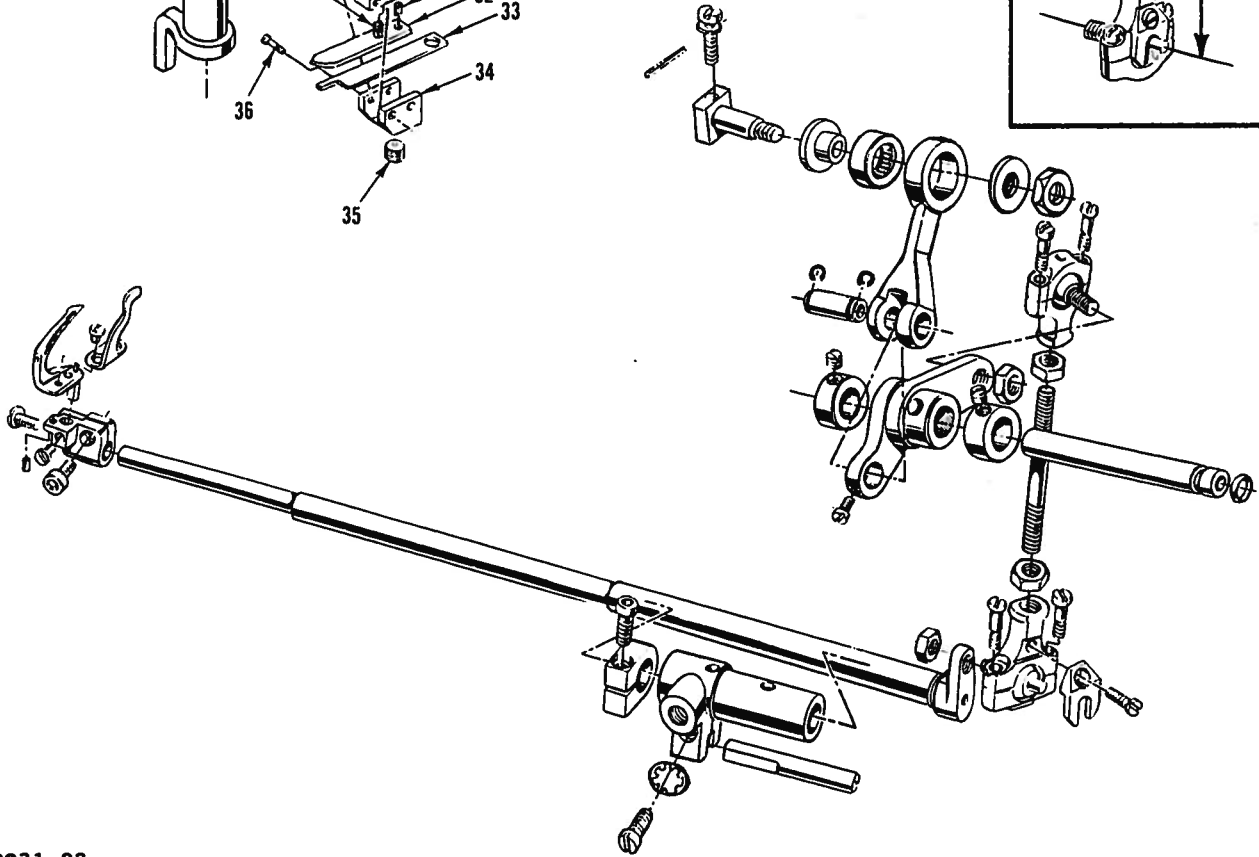
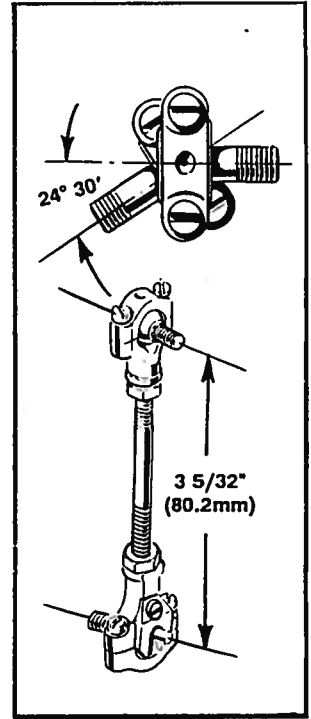
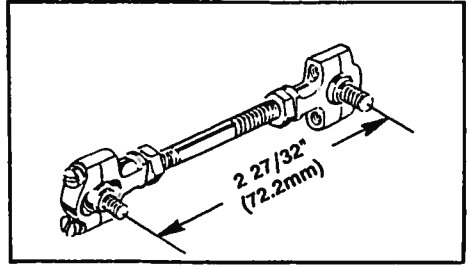
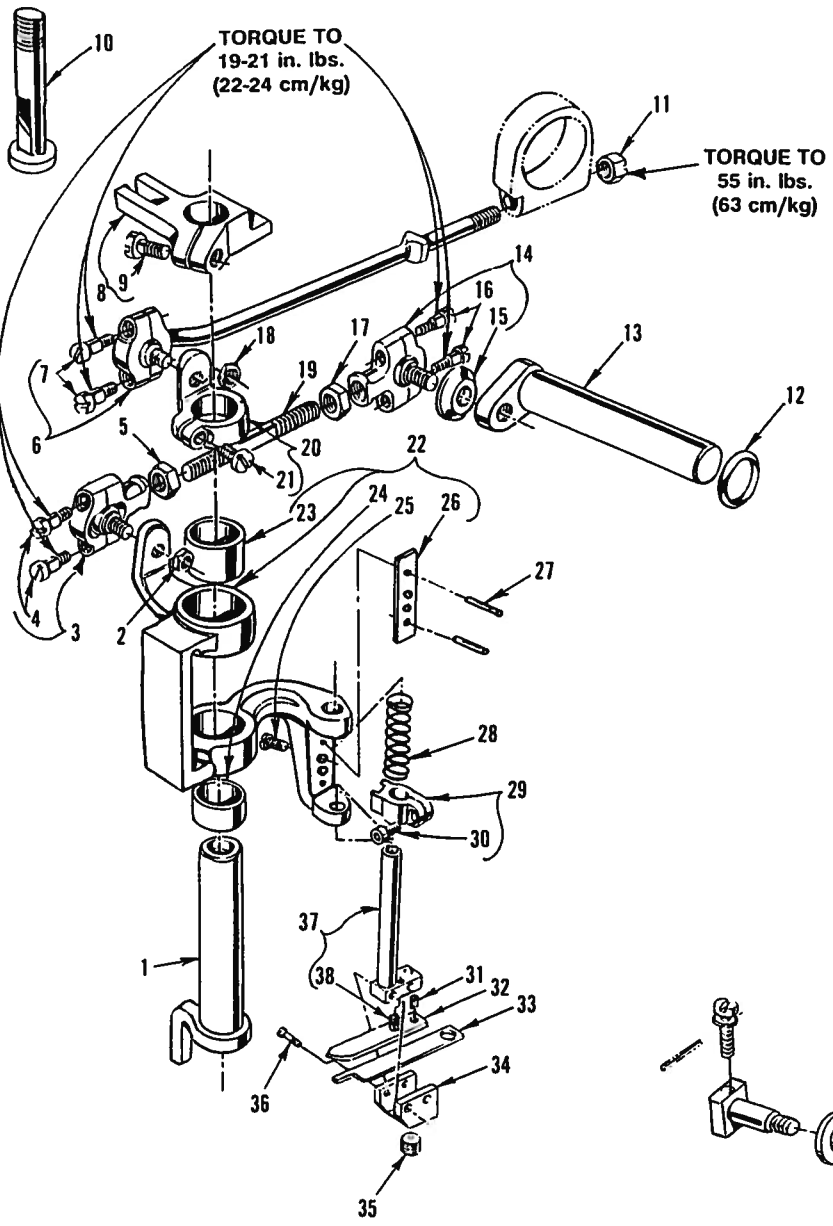
DIFFERENTIAL & MAIN FEED BARS, FEED DOGS & FEED LIFT ECCENTRIC ASSEMBLY

Ref. No.	Part No.	Description	Amt. Req.
1	22845 M	Screw, differential feed bar driving link	1
2	36236 F	Differential Feed Bar Driving Link	1
3	36234 D	Feed Bar Eccentric Stud	1
4	36234 F	Differential Feed Bar	1
5	36234 G	Feed Bar Plate	1
6	22587 H	Screw	2
7	22528	Screw, differential feed dog	1
8	36226 A	Differential Feed Dog, marked "FV", 14 teeth per inch, Styles 36200 AK, PA, PJ, PX, TA, TJ, TX.....	1
-	36226 B	Differential Feed Dog, marked "PB", 16 teeth per inch	1
-	36226 H	Differential Feed Dog, marked "PQ", 14 teeth per inch, .050" (1.27mm) step on right side, Styles 36200 PH, TH	1
-	36226 J	Differential Feed Dog, marked "VU", 16 teeth per inch, .050" (1.27mm) step on right side, Styles 36200 PM, TM	1
9	87 U	Screw, needle guard	1
10	36225	Needle Guard, all Styles	1
11	22528	Screw, main feed dog	1
12	36205 A	Main Feed Dog, marked "PK", 14 teeth per inch, Styles 36200 AK, PA, PJ, PX, TA, TJ, TX.....	1
-	36205 B	Main Feed Dog, marked "PL", 16 teeth per inch	1
-	36205 H	Main Feed Dog, marked "PR", 14 teeth per inch, .050" (1.27mm) step on right side, Styles 36200 PH, TH	1
-	36205 J	Main Feed Dog, marked "VV", 16 teeth per inch, .050" (1.27mm) step on right side, Styles 36200 PM, TM	1
13	36234 E	Main Feed Bar	1
14	22578 H	Screw	2
15	36234 G	Feed Bar Plate	1
16	36234 C	Feed Bar Slide Block	1
17	36236 H	Bushing	2
18	36236 G	Driving Link Stud	2
19	33174 B	Screw	1
20	36236 E	Main Feed Bar Drive Link	1
21	62238 A	Link Pin	1
22	29478 CS	Feed Lift Eccentric Assembly	1
23	29103 T	Feed Lift Eccentric Assembly Ball Joint	1
24	22894 W	Set Screw	2
25	22587 E	Screw	2
26	269	Nut, left thread	1
27	36244	Connecting Rod	1
28	18	Nut, right thread	1
29	36244 A	Ball Joint, complete	1
30	22729 C	Screw	2
31	41255 B	Ball Fork	1
32	22747	Screw, ball fork	1



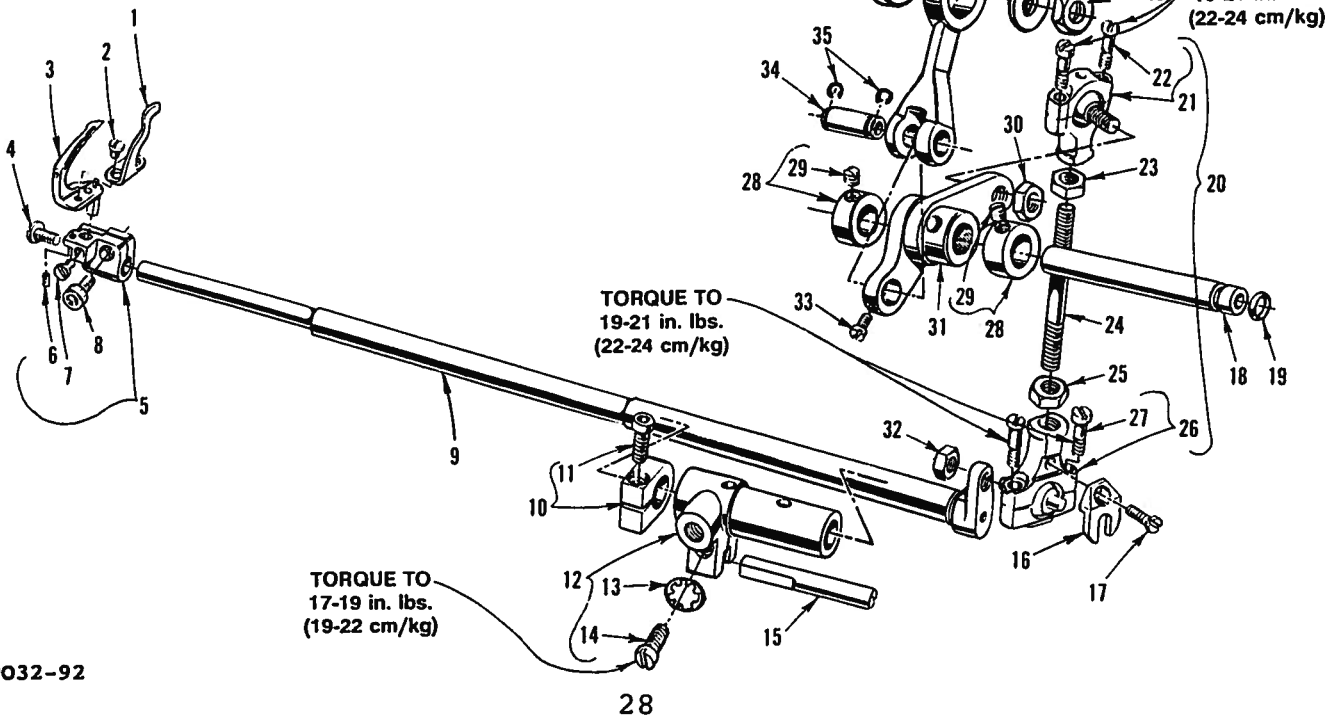
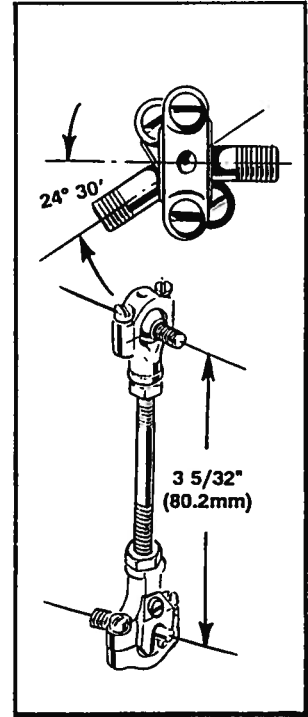
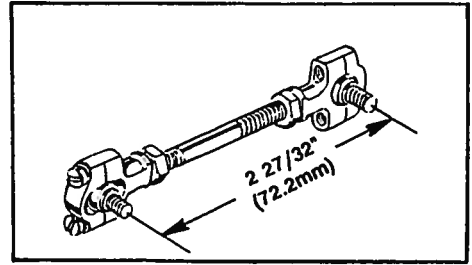
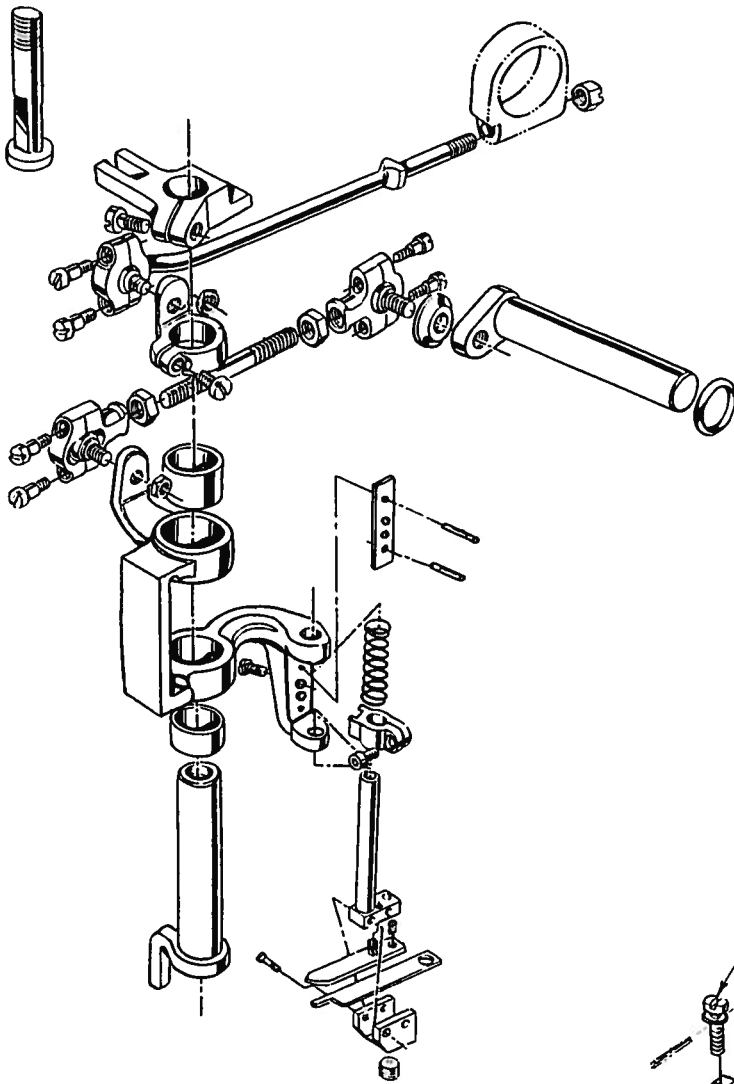
FEED DRIVE ASSEMBLY, FEED ROCKER & LOOPER AVOID PARTS

Ref. No.	Part No.	Description	Amt. Req.
1	660-207	Oil Seal Ring	1
2	36236 A	Feed Rocker Shaft	1
3	36237	Differential Feed Adjusting Lever	1
4	36237 A	Differential Feed Adjusting Link	1
5	22504 C	Screw	1
6	36236 J	Differential Driving Link Stud	1
7	36236 K	Differential Feed Driving Link Slide Block	1
8	36236	Feed Rocker	1
9	77	Screw	2
10	36236 B	Bushing	1
11	660-206	Oil Seal Ring	1
12	22711	Screw	1
13	29478 CT	Feed Drive Assembly	1
14	29101 J	Feed Drive Eccentric Assembly	1
15	22587 E	Screw	2
16	22894 W	Set Screw	2
17	269	Nut, left thread	1
18	43246	Connecting Rod	1
19	18	Nut, right thread	1
20	35846	Ball Joint	1
21	22729 C	Screw	2
22	35846 B	Washer	1
23	35866	Nut	1
24	36236 B	Bushing	1
25	660-206	Oil Seal Ring	1
26	22711	Screw	1
27	35766 B	Nut	1
28	35842 J	Feed Drive and Looper Avoid Drive Lever	1
29	36236 A	Feed Drive Shaft	1
30	660-207	Oil Seal Ring	1
31	35836 C	Screw, feed rocker driving link	1
32	36236 H	Bushing	1
33	258	Nut	1
34	6042 A	Washer	1
35	36236 C	Feed Rocker Driving Link	1
36	62238 A	Link Pin	1
37	29478 DM	Looper Drive Shaft Cross Head Connecting Rod Assembly	1
38	35851 K	Screw	2
39	56341 F	Ferrule	2
40	35851 M	Connecting Rod	1



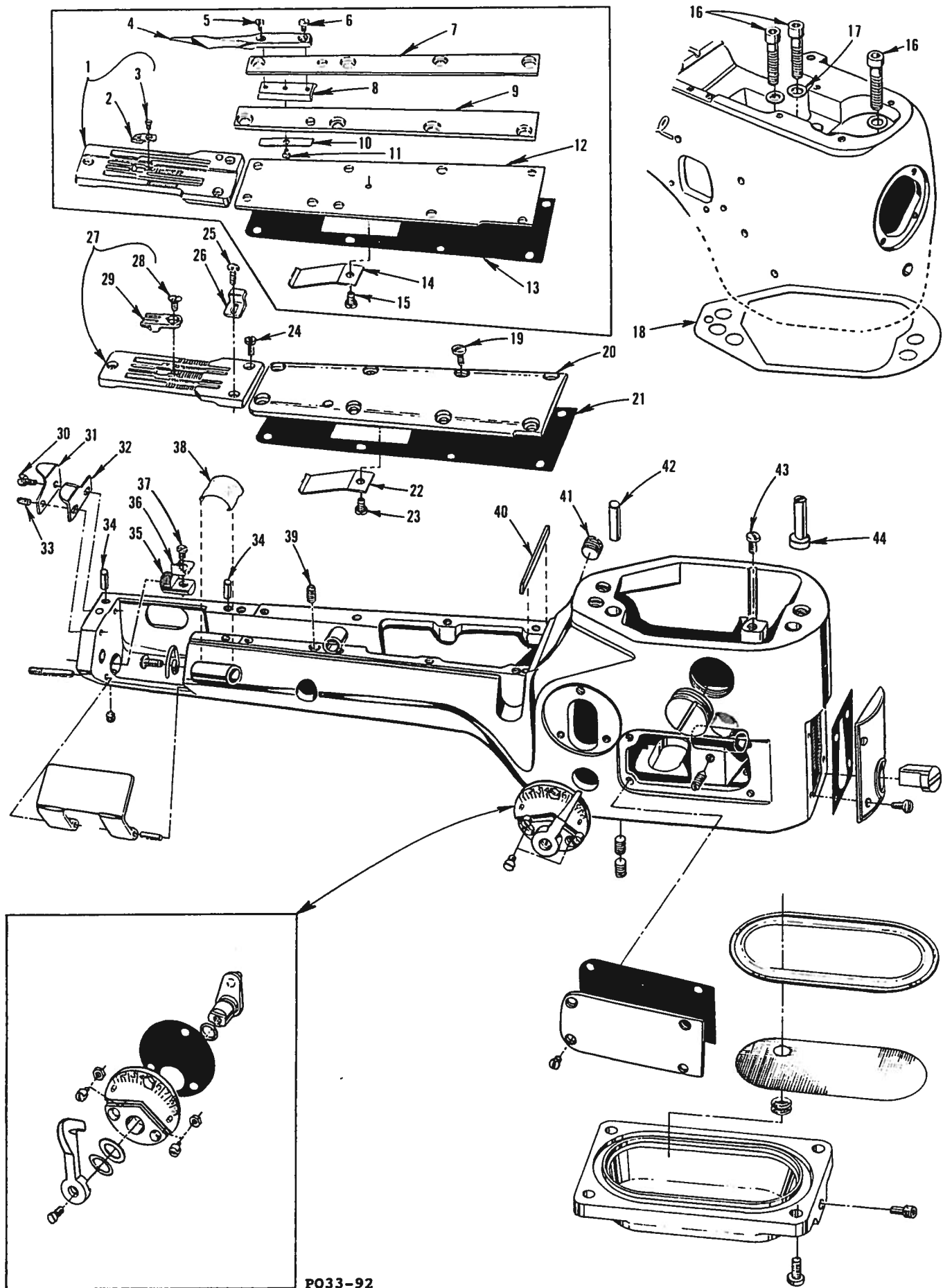
KNIFE DRIVING PARTS

Ref. No.	Part No.	Description	Amt. Req.
1	36251 B	Cover Thread Carrier and Hook Driving Sleeve	1
2	12934 A	Nut	1
3	52848 B	Knife Drive Connection Ball Joint, left	1
4	22729 C	Screw	2
5	18	Nut, right thread	1
6	36251 P	Cover Thread Carrier and Hook Driving Connection Rod Ball Joint	1
7	97 A	Screw	2
8	36278 J	Presser Bar Guide	1
9	22585	Screw	1
10	36278 H	Presser Bar Guide Stud	1
11	52841 H	Nut	1
12	660-202	Oil Seal Ring	1
13	36261	Knife Drive Lever	1
14	52848 C	Knife Drive Connection Ball Joint, right	1
15	36 G	Washer	1
16	22729 C	Screw	2
17	269	Nut, left thread	1
18	12934 A	Nut	1
19	4761	Knife Drive Connecting Rod	1
20	36251 C	Sleeve Driving Lever, Styles 36200 AK, PA, PH, PX, TA, TH, TX	1
-	36251 V	Sleeve Driving Lever, Styles 36200 PJ, PM, TJ, TM	1
21	22585	Screw	1
22	36273 M	Knife Driving Bracket	1
23	36273 F	Bushing	1
24	36273 N	Bushing	1
25	605 A	Screw	2
26	36273 J	Knife Holder Guide Plate	1
27	660-219 D	Roll Pin	2
28	36273 C	Knife Holder Spring	1
29	36273 K	Knife Holder Guide Collar	1
30	22729 M	Screw	1
31	22799 N	Screw	1
32	36273 D	Knife Support	1
33	36270	Knife, upper	1
34	36273 G	Knife Holder	1
35	22894 X	Screw	1
36	22767 A	Screw	2
37	36273 A	Knife Holder Shank	1
38	1096 B	Screw	1



LOOPER ROCKER SHAFT & LOOPER ROCKER DRIVE PARTS

Ref. No.	Part No.	Description	Amt. Req.
1	36210	Looper Mounted Needle Guard, marked "FZ"	1
2	604	Screw, needle guard	2
3	36208 A	Looper	1
4	22585 A	Screw	1
5	36248	Looper Holder	1
6	1096 B	Looper Adjusting Screw	1
7	22564 D	Screw	1
8	22652 A-6	Screw	1
9	36249	Looper Rocker Shaft	1
10	35751 G	Looper Shaft Collar	1
11	22572 B	Screw	1
12	36249 B	Looper Shaft Sleeve	1
13	652 C-9	Washer	1
14	22729 D	Screw	1
15	36278 C	Guide Stud	1
16	41255 B	Ball Fork	1
17	22747	Screw	1
18	36253 B	Looper Drive Lever Shaft	1
19	660-221	Oil Seal Ring	1
20	29478 CU	Looper Drive Connecting Rod Assembly	1
21	35851 L	Ball Joint, upper	1
22	22729 C	Screw	2
23	269	Nut, left thread	1
24	4761	Connecting Rod	1
25	18	Nut, right thread	1
26	39145 A	Ball Joint, lower	1
27	22729 C	Screw	2
28	12865	Collar	2
29	88	Screw	2
30	15037 A	Nut	1
31	36253 A	Looper Drive Lever	1
32	258 A	Nut	1
33	77	Screw	1
34	52336	Link Pin	1
35	660-215	Retaining Ring	2
36	22795 B	Screw	1
37	36253 G	Looper Drive Crank Stud	1
38	29478 DR	Looper Drive Connecting Rod and Ferrule Sub-Assembly	1
39	36253 J	Ferrule	1
40	36253 H	Looper Drive Connecting Rod, upper	1
41	660-311	Needle Bearing	1
42	20	Washer	1
43	269	Nut, left thread	1

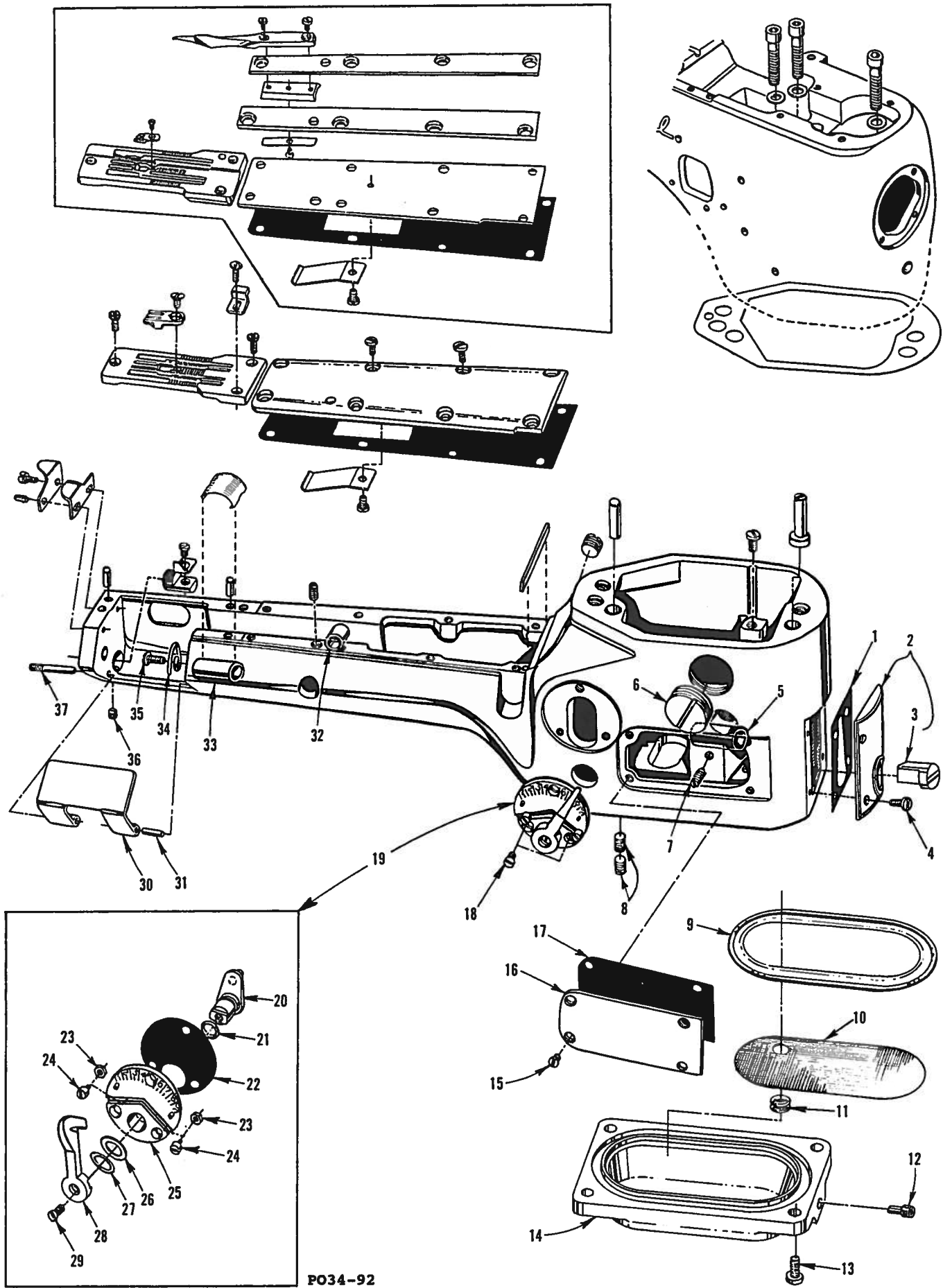


P033-92

LAP FORMER, MISCELLANEOUS CYLINDER COVERS, THROAT PLATES, & CHAIN CUTTING KNIFE

Ref. No.	Part No.	Description	Amt. Req.	
1	36224 H	Throat Plate, .050" (1.27mm) step on right side, Styles 36200 PH, TH	1	
-	36224 K	Throat Plate, .050" (1.27mm) step on right side, Styles 36200 PM, TM	1	
2	36240	Stitch Tongue, marked "D", Styles 36200 PH, TH	1	
-	36240 J	Stitch Tongue, marked "AC", Styles 36200 PM, TM	1	
3	22716 A	Screw, stitch tongue	1	
*	4	23420 DB	Lap Former	1
*	5	22738 F	Screw, lap former	1
*	6	73 A	Screw, lap former	1
*	7	36283 J	Gib, right	1
*	8	23423 X	Lap Former Slide Block	1
*	9	36283 H	Gib, left	1
*	10	23424 Z	Spring, lap former slide block	1
*	11	22716 A	Screw, lap former slide block spring	1
*	12	36283 G	Cylinder Cover	1
	13	36283 F	Gasket, cylinder cover, all Styles	1
	14	36284 E	Upper Lint Shield, all Styles	1
	15	22798	Screw, upper lint shield	1
	16	22653 E-20	Screw, for joining cylinder to main frame	3
	17	35876 U	Washer	3
	18	36284	Gasket	1
	19	98 A	Screw, cylinder cover all Styles	8
	20	36283 E	Cylinder Cover, all Styles except 36200 PH, PM, TH, TM	1
	21	36283 F	Gasket, cylinder cover, all Styles	1
	22	36284 E	Upper Lint Shield, all Styles	1
	23	22798	Screw, upper lint shield	1
	24	22562 A	Screw, throat plate	3
	25	22849	Screw, edge guide	1
	26	36203	Edge Guide, Styles 36200 AK, PA, PJ, TA, TJ	1
	27	C36224 A	Throat Plate, Styles 36200 AK, PA, PX, TA, TX	1
	-	C36224 J	Throat Plate, Styles 36200 PJ, TJ	1
	28	22716 A	Screw, stitch tongue	1
	29	36240	Stitch Tongue, marked "D", Styles 36200 AK, PA, PX, TA, TX	1
	-	36240 J	Stitch Tongue, marked "AC", Styles 36200 PJ, TJ	1
	30	22 KH	Screw, chain cutting knife, all Styles	1
	31	36296 B	Guard, chain cutting knife, all Styles	1
	32	36296 A	Chain Cutting Knife, all Styles	1
	33	22801	Screw, chain cutting knife, all Styles	1
	34	36251 K	Dowel Pin	2
	35	36283 C	Cylinder Hinged Spring Support Stud	1
	36	36283 B	Spring	1
	37	22585 C	Screw, spring	1
	38	35884 K	Lower Lint Shield	1
	39	531	Screw	1
	40	35883 V	Gasket	1
	41	22571 A	Plug Screw	1
	42	667 D-16	Dowel Pin	1
	43	22596 D	Screw, feed bar eccentric stud	1
	44	36229 A-1	Cylinder Alignment Eccentric Pin	1

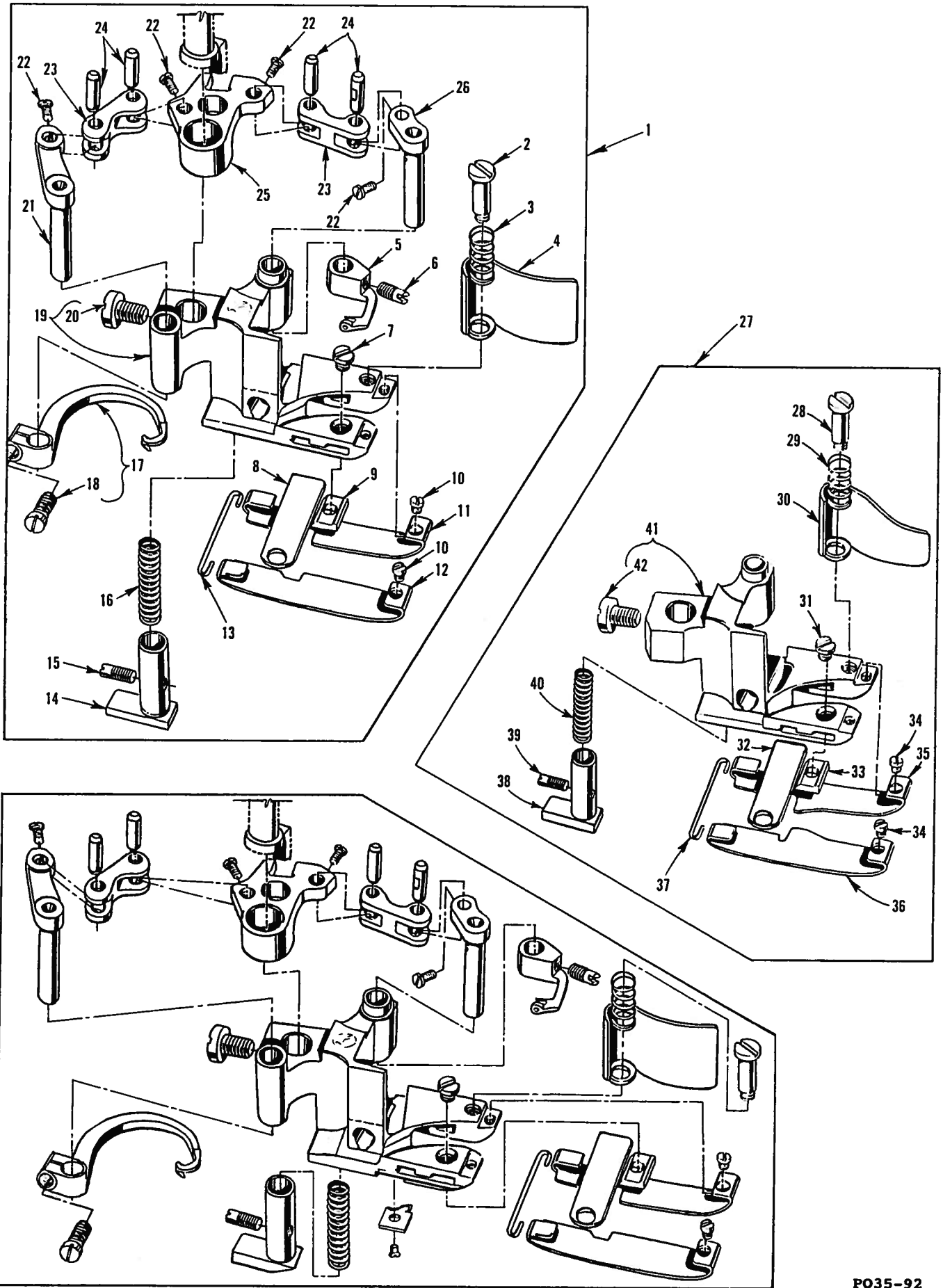
* Indicates parts for lap former used on Styles 36200 PH, PM, TH and TM only.



PO34-92

CYLINDER BUSHINGS, DIFFERENTIAL FEED CONTROL ASSY. & MISC. CYLINDER COVERS

Ref. No.	Part No.	Description	Amt. Req.
1	35884 D	Gasket, front cylinder cover and oil gauge	1
2	36284 C	Cylinder Cover and Oil Gauge, front	1
3	51-15 BLK	Oil Gauge	1
4	J87 J	Screw, front cylinder cover and oil gauge	4
5	36249 A	Bushing, looper shaft, front	1
6	22539 W	Plug Screw	1
7	22560 A	Screw, for 36278C guide stud	1
8	531	Screw	2
9	36284 F	Gasket, bottom cover	1
10	36293 G	Screen, bottom cover	1
11	661-150	Rubber "O" Ring, for screen	1
12	22571 E	Magnetic Oil Drain Plug Screw	1
13	22596	Screw, bottom cover	4
14	36282	Bottom Cover	1
15	22766	Screw, cylinder side cover	4
16	36286	Cylinder Side Cover	1
17	36286 A	Gasket, cylinder side cover	1
18	87 A	Screw, differential feed control assembly	3
19	29478 CZ	Differential Feed Control Assembly, complete ..	1
20	36237 E	Adjusting Lever	1
21	660-220	Oil Seal Ring	1
22	36238 E	Gasket	1
23	60078 Z	Nut	2
24	36237 H	Stop Screw	2
25	36238	Adjusting Plate	1
26	652 K-24	Fiber Washer	1
27	36237 J	Spring Washer	1
28	36237 K	Operating Lever	1
29	538	Screw	1
30	36283 K	Cylinder Hinged Cover	1
31	35883 G	Pin	1
32	36237 F	Bushing, feed bar eccentric stud	1
33	35850 E	Bushing, looper shaft, rear	1
34	36256 B	Looper Thread Guide Wire	1
35	22849	Screw, looper thread guide wire	1
36	22894 W	Screw, cylinder hinged spring support stud	1
37	22791 E	Screw Pin	1

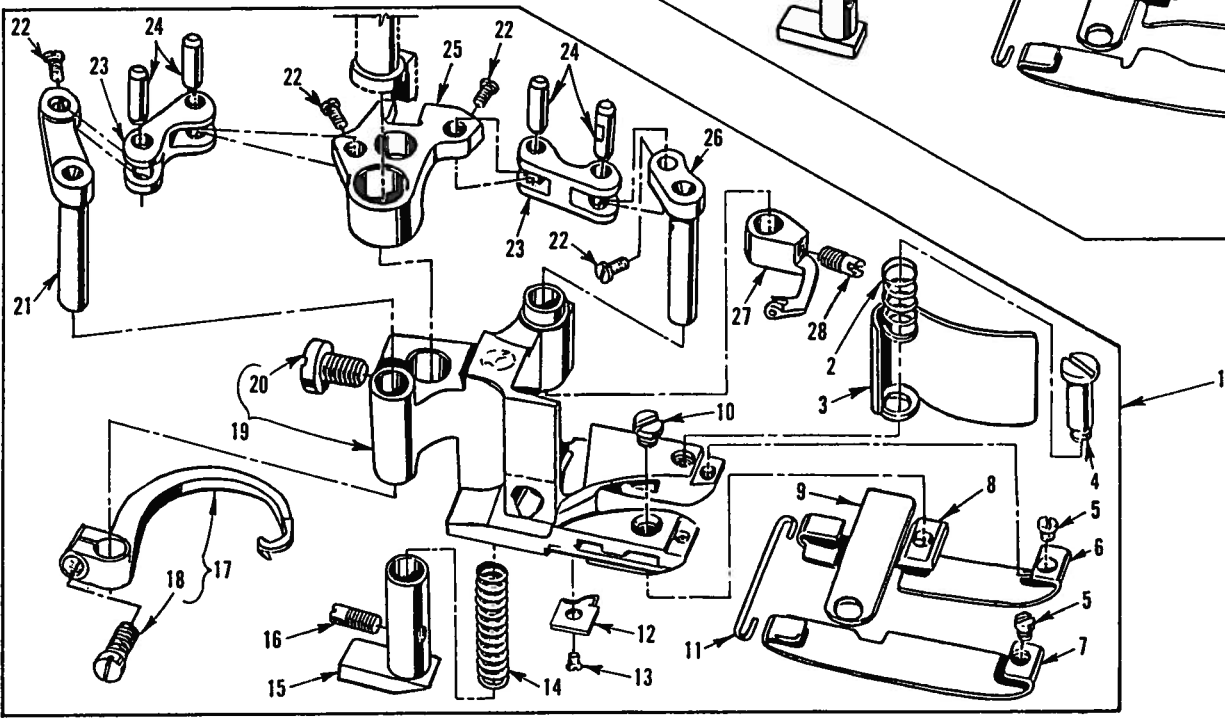
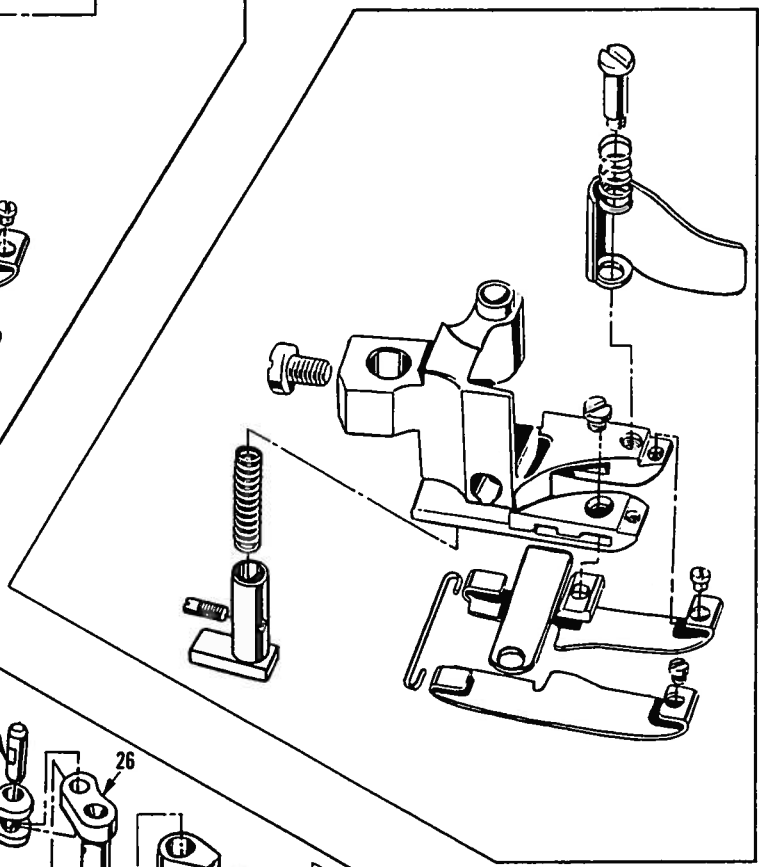
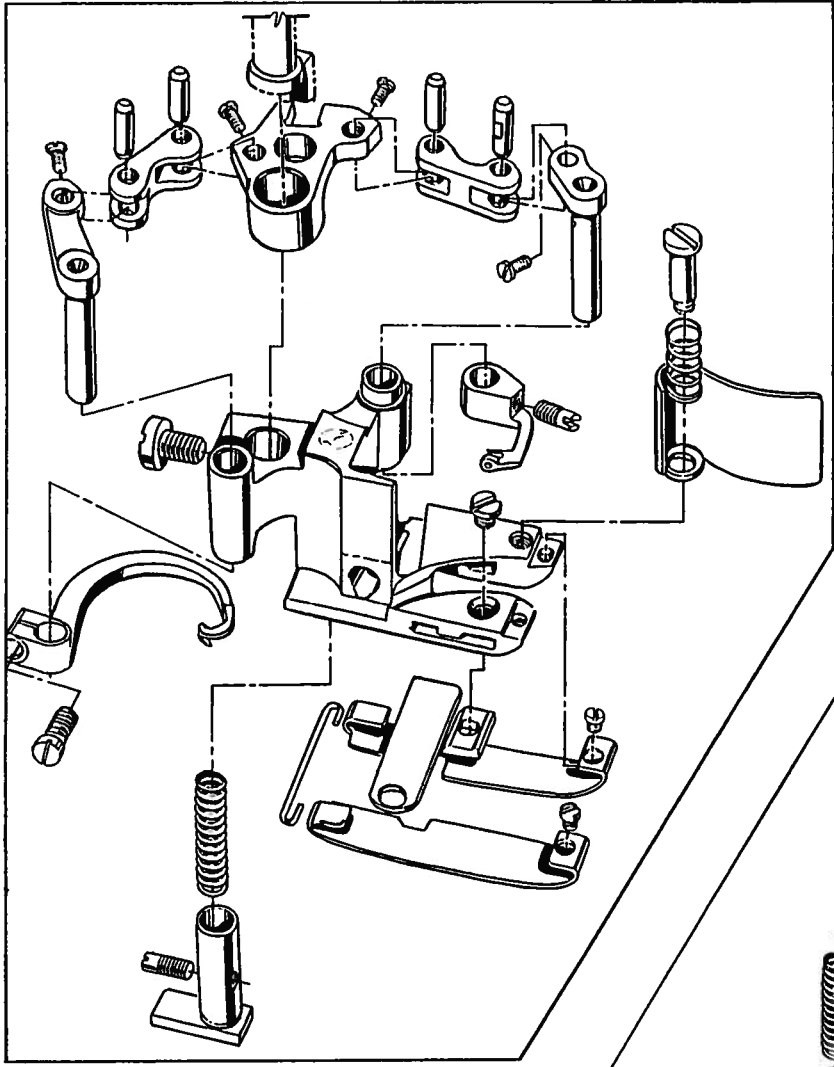


PRESSER FEET

Ref. No.	Part No.	Description	Amt. Req.
1	36220 A	Presser Foot, complete, Styles 36200 PA, TA	1
-	36220 K	Presser Foot, complete, Styles 36200 PJ, TJ	1
-	36220 L	Presser Foot, complete, Styles 36200 AK	1
2	22731	Screw, chip guard	1
3	36279 D	Spring, chip guard	1
4	36279 C	Chip Guard	1
5	36251 E	Cover Thread Carrier, for 36220 A, L presser foot	1
-	36251 W	Cover Thread Carrier, for 36220 K presser foot	1
6	22565 A	Screw, cover thread carrier	1
7	150	Screw, stationary knife clamp	1
8	36250	Stationary Knife	1
*	9	36250 B Stationary Knife Clamp, .318" (8.08mm) black finish	1
*	-	36250 G Stationary Knife Clamp, .326" (8.28mm) bright finish	1
10	22738 G	Screw, presser foot shoe	2
#	11	36232 AH Presser Foot Shoe, right, for 36220 A, K, L presser foot ..	1
#	12	36231 AH Presser Foot Shoe, left, for 36220 A, K, L presser foot ..	1
13	36230 D	Shoe Holding Wire	1
14	36230 J	Yielding Section, for 36220 A, K presser foot	1
-	36230 P	Yielding Section, for 36220 L presser foot	1
15	22565 A	Screw, yielding section	1
16	36230 C	Spring, yielding section	1
17	36251 F	Cross Thread Hook, for 36220 A, L presser foot	1
-	36251 FA	Cross Thread Hook, for 36220 K presser foot	1
18	22562 A	Screw, cross thread hook	1
19	36220 U	Presser Foot Base, for 36220 A, K, L presser foot	1
20	94	Screw, presser foot base	1
21	36251 H	Cover Thread Hook Driving Lever and Shaft	1
22	22738 P	Screw	4
23	36251 J	Link, for ref. no. 21, 25 and 26	2
24	36251 K	Link Pin	4
25	36251 L	Cover Thread Carrier and Hook Driving Segment	1
26	36251 G	Cover Thread Carrier Driving Lever and Shaft	1
27	36220 B	Presser Foot, complete, Styles 36200 PX, TX	1
28	22731	Screw, chip guard	1
29	36279 D	Spring, chip guard	1
30	36279 H	Chip Guard	1
31	150	Screw, stationary knife clamp	1
32	36250	Stationary Knife	1
*	33	36250 B Stationary Knife Clamp, .318" (8.08mm) black finish	1
*	-	36250 G Stationary Knife Clamp, .326" (8.28mm) bright finish	1
34	22738 G	Screw, presser foot shoe	2
#	35	36232 AL Presser Foot Shoe, right, for 36220 B presser foot	1
#	36	36231 AL Presser Foot Shoe, left, for 36220 B presser foot	1
37	36230 D	Shoe Holding Wire	1
38	36230 J	Yielding Section	1
39	22565 A	Screw, yielding section	1
40	36230 C	Spring, yielding section	1
41	36230 G	Presser Foot Base, for 36220 B presser foot	1
42	94	Screw, presser foot base	1

* When replacing the stationary knife clamp, order the clamp that has the same finish as the one being replaced.

See page 39 for other presser foot shoes available.



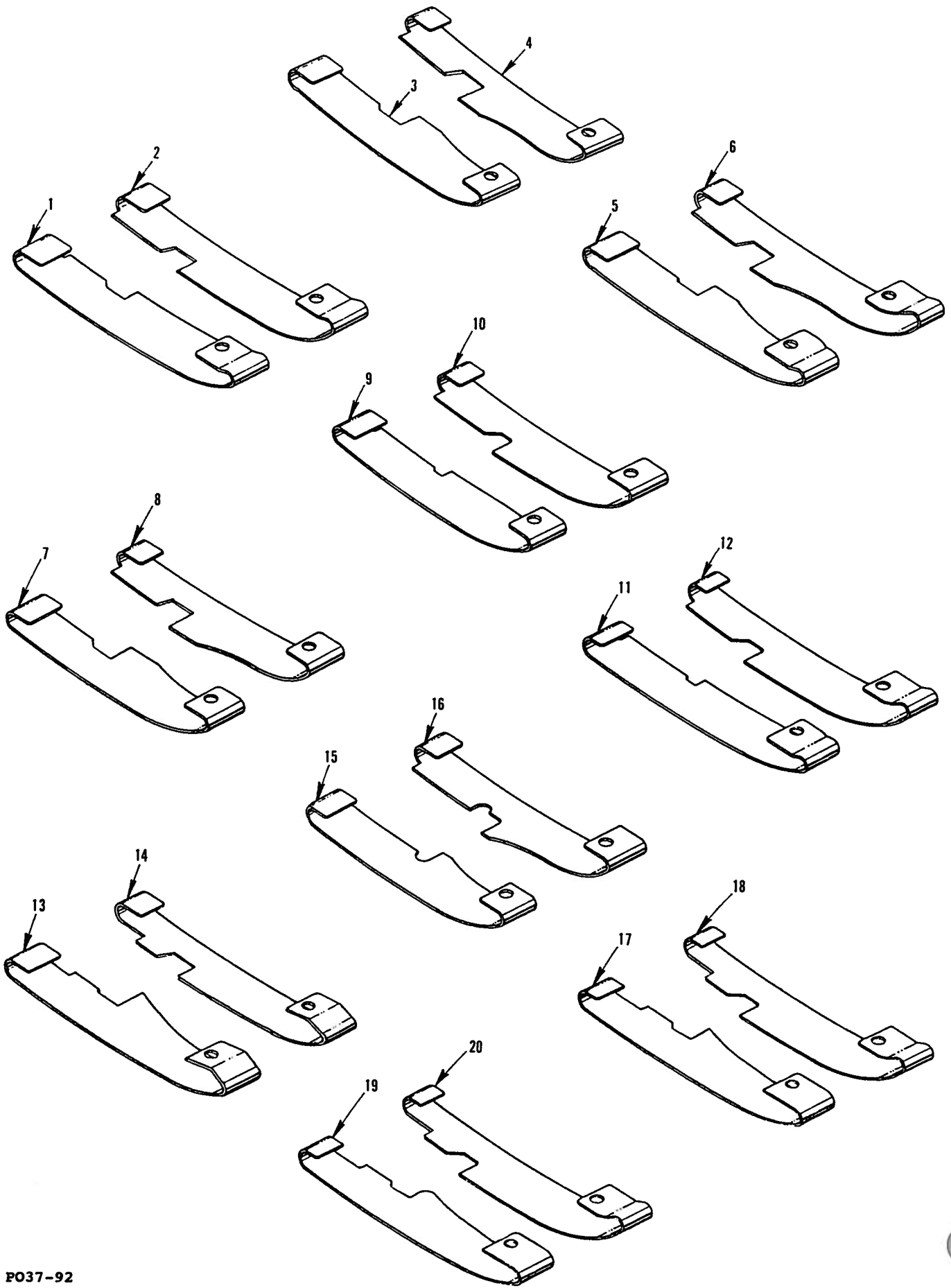
P036-92

PRESSER FEET

Ref. No.	Part No.	Description	Amt. Req.
1	36220 H	Presser Foot, complete, Styles 36200 PH, TH	1
-	36220 M	Presser Foot, complete, Styles 36200 PM, TM	1
2	36230 C	Spring, chip guard	1
3	36279 C	Chip Guard	1
4	22731	Screw, chip guard	1
5	22738 G	Screw, presser foot shoe	2
#	6	36232 AM Presser Foot Shoe, right, for Style 36220 H presser foot .	1
#	-	36232 AP Presser Foot Shoe, right, for Style 36220 M presser foot .	1
#	7	36231 AM Presser Foot Shoe, left, for Style 36220 H presser foot ..	1
#	-	36231 AP Presser Foot Shoe, left, for Style 36220 M presser foot ..	1
*	8	36250 B Stationary Knife Clamp, .318" (8.08mm) black finish	1
*	-	36250 G Stationary Knife Clamp, .326" (8.28mm) bright finish	1
	9	36250 Stationary Knife	1
	10	150 Screw, stationary knife clamp	1
	11	36230 D Shoe Holding Wire	1
	12	36230 R Cloth Guide Plate	1
	13	22716 A Screw, cloth guide plate	1
	14	36230 C Spring, yielding section	1
	15	36230 P Yielding Section	1
	16	22565 A Screw, yielding section	1
	17	36251 F Cross Thread Hook, for 36220 H presser foot	1
	-	36251 FA Cross Thread Hook, for 36220 M presser foot	1
	18	22562 A Screw, cross thread hook	1
	19	36230 S Presser Foot Base, for 36220 H presser foot	1
	-	36230 V Presser Foot Base, for 36220 M presser foot	1
	20	94 Screw, presser foot base	1
	21	63251 H Cover Thread Hook Driving Lever and Shaft	1
	22	22738 P Screw	4
	23	36251 J Link, for ref. no. 21, 25 and 26	2
	24	36251 K Link Pin	4
	25	36251 L Cover Thread Carrier and Hook Driving Segment	1
	26	36251 G Cover Thread Carrier Driving Lever and Shaft	1
	27	36251 E Cover Thread Carrier, Styles 36200 PH, TH	1
	-	36251 W Cover Thread Carrier, Styles 36200 PM, TM	1
	28	22565 A Screw, cover thread carrier	1

* When replacing the stationary knife clamp, order the clamp that has the same finish as the one being replaced.

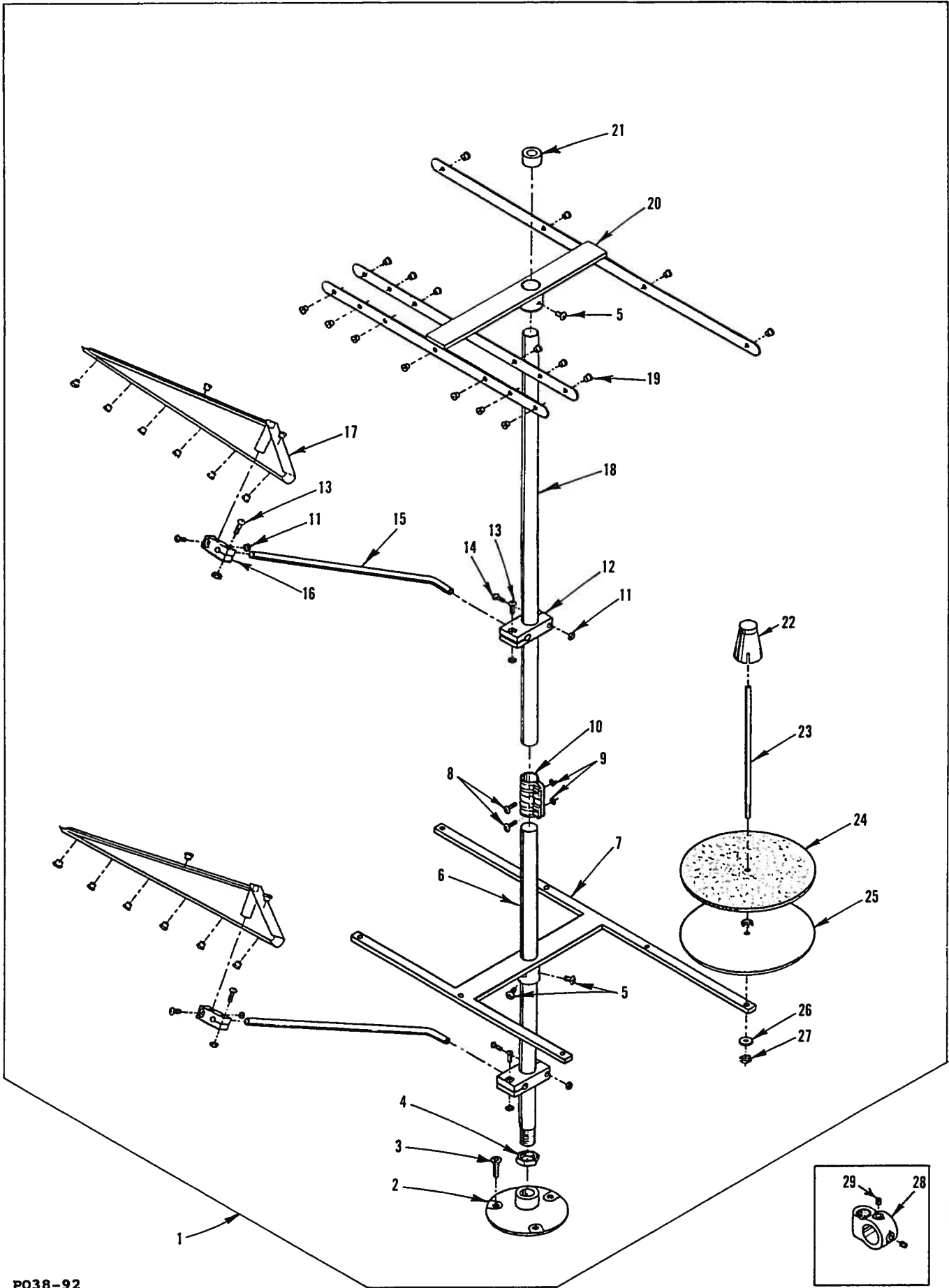
See page 39 for other presser foot shoes available.



P037-92

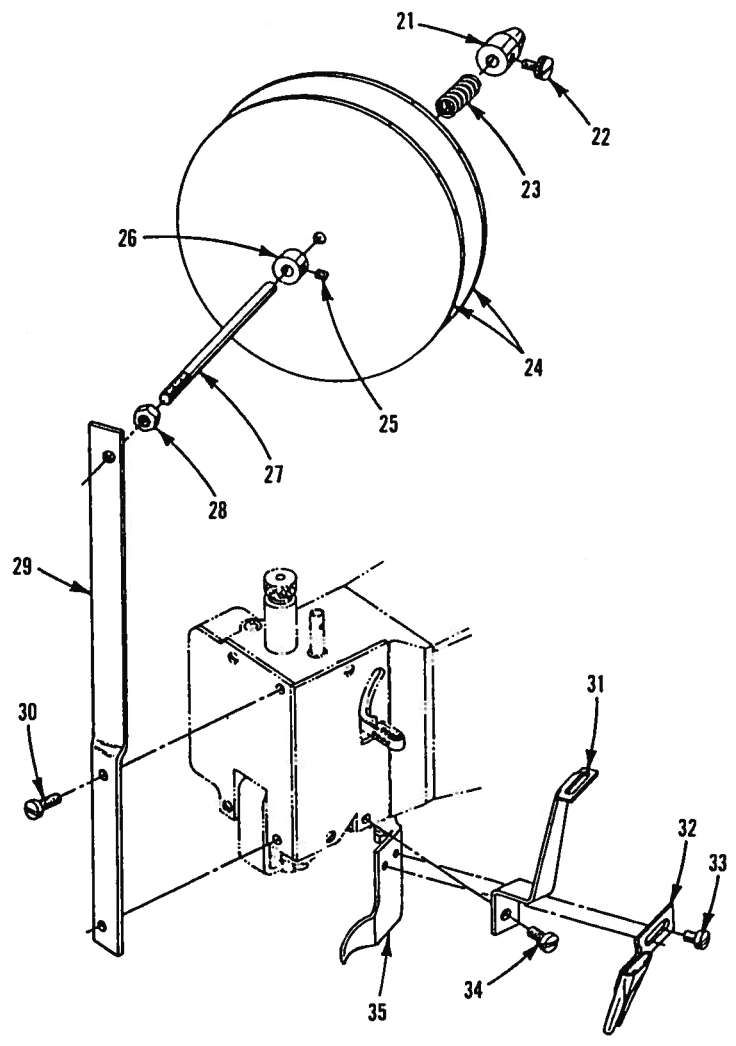
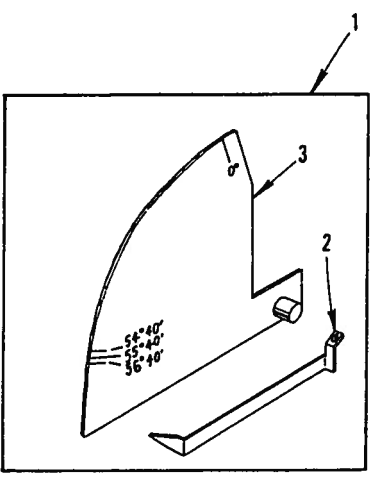
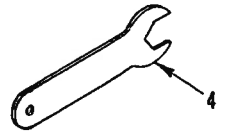
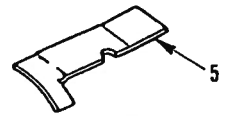
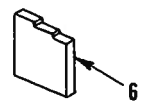
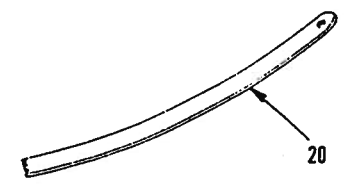
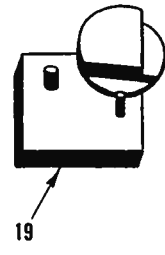
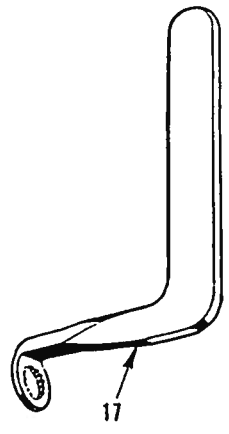
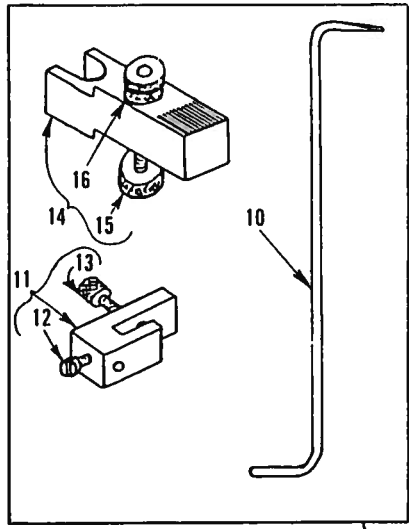
PRESSER FOOT SHOES

Ref. No.	Part No.	Description	Amt. Req.
1	36231 AD	Presser Foot Shoe, left, 1/64" (.4mm) thick, 3/8" (9.5mm) wide, extended toe	1
2	36232 AD	Presser Foot Shoe, right, 1/64" (.4mm) thick, 11/32" (8.7mm) wide, extended toe	1
3	36231 AE	Presser Foot Shoe, left, 1/64" (.4mm) thick, 13/32" (10.3mm) wide, short toe	1
4	36232 AE	Presser Foot Shoe, right, 1/64" (.4mm) thick, 3/8" (9.5mm) wide, short toe	1
5	36231 AF	Presser Foot Shoe, left, 1/64" (.4mm) thick, 13/32" (10.3mm) wide, extended toe	1
6	36232 AF	Presser Foot Shoe, right, 1/64" (.4mm) thick, 3/8" (9.5mm) wide, extended toe	1
7	36231 AG	Presser Foot Shoe, left, 1/64" (.4mm) thick, 13/32" (10.3mm) wide, short toe	1
8	36232 AG	Presser Foot Shoe, right, 1/64" (.4mm) thick, 3/8" (9.5mm) wide, short toe	1
9	36231 AH	Presser Foot Shoe, left, 1/64" (.4mm) thick, 11/32" (8.7mm) wide, short toe. On 36220A, K and L presser foot, furnished standard on Styles 36200 AK, PA, PJ, TA, TJ	1
10	36232 AH	Presser Foot Shoe, right, 1/64" (.4mm) thick, 11/32" (8.7mm) wide, short toe. On 36220A, K and L presser foot, furnished standard on Styles 36200 AK, PA, PJ, TA, TJ	1
11	36231 AJ	Presser Foot Shoe, left, 1/64" (.4mm) thick, 11/32" (8.7mm) wide, extended toe	1
12	36232 AJ	Presser Foot Shoe, right, 1/64" (.4mm) thick, 11/32" (8.7mm) wide, extended toe	1
13	36231 AK	Presser Foot Shoe, left, 1/64" (.4mm) thick, 1/2" (12.7mm) wide, extended toe	1
14	36232 AK	Presser Foot Shoe, right, 1/64" (.4mm) thick, 9/32" (7.1mm) wide, extended toe	1
15	36231 AL	Presser Foot Shoe, left, 1/64" (.4mm) thick, 13/32" (10.3mm) wide, short toe. On 36220B presser foot, furnished standard on Styles 36200 PX, TX	1
16	36232 AL	Presser Foot Shoe, right, 1/64" (.4mm) thick, 3/8" (9.5mm) wide, short toe. On 36220B presser foot, furnished standard on Styles 36200 PX, TX	1
17	36231 AM	Presser Foot Shoe, left, 1/64" (.4mm) thick, 1/2" (12.7mm) wide, extended toe. On 36220H presser foot, furnished standard on Styles 36200 PH, TH	1
18	36232 AM	Presser Foot Shoe, right, 1/64" (.4mm) thick, 3/16" (4.7mm) wide, extended toe. On 36220H presser foot, furnished standard on Styles 36200 PH, TH	1
19	36231 AP	Presser Foot Shoe, left, 1/64" (.4mm) thick, 1/2" (12.7mm) wide, extended toe. On 36220M presser foot, furnished standard on Styles 36200 PM, TM	1
20	36232 AP	Presser Foot Shoe, right, 1/64" (.4mm) thick, 9/32" (7.1mm) wide, extended toe. On 36220M presser foot, furnished standard on Styles 36200 PM, TM	1



THREAD STAND

Ref. No.	Part No.	Description	Amt. Req.
1	21101-S-7	Thread Stand, complete	
		Styles 36200 AK, TA, TH, TJ, TM, TX	1
2		Thread Stand Base,	
		Styles 36200 TA, TH, TJ, TM, TX	1
3		Screw, Styles 36200 TA, TH, TJ, TM, TX	3
4		Nut	1
5		Screw	4
6		Thread Stand Rod, short	1
7		Base Bracket	1
8		Screw	2
9		Nut	2
10		Joint	1
11		Nut	8
12		Holder, large	2
13		Screw	6
14		Screw, long	2
15		Thread Guide Rod	2
16		Holder, thread guide	2
17		Thread Guide	2
18		Thread Stand Rod, long	1
19		Thread Eyelet	34
20		Thread Guide	1
21		Cap	1
22		Spool Retainer	7
23		Spool Pin	7
24		Felt Disc	7
25		Support Disc	7
26		Spring Washer	7
27		Nut	14
28	21233 AJ	Bracket Connection, marked "AJ",	
		Style 36200 AK	1
-	21233 KS	Bracket Connection, marked "KS",	
		Styles 36200 PA, PH, PJ, PM, PX	1
29	22651 CD-5	Screw, bracket connection (21233AJ)	4
-	22651 CD-5	Screw, bracket connection (21233KS)	2

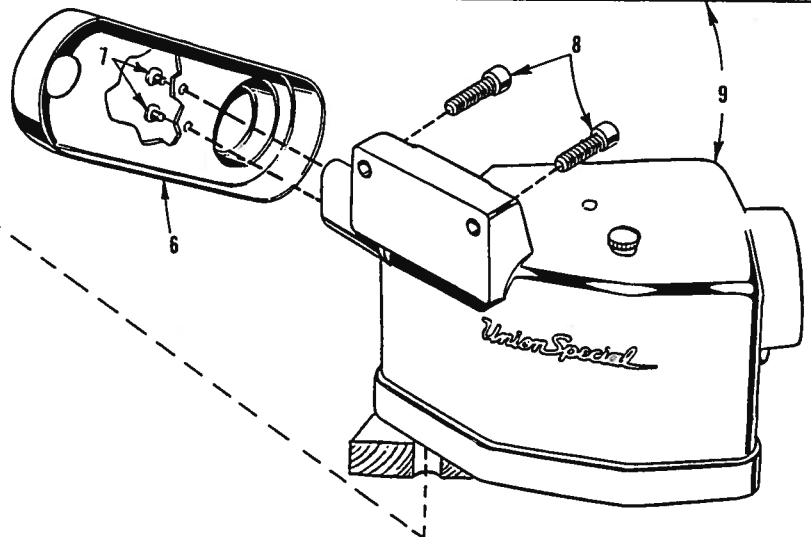
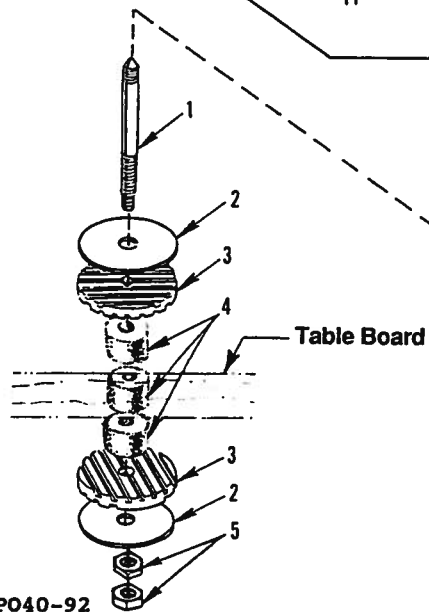
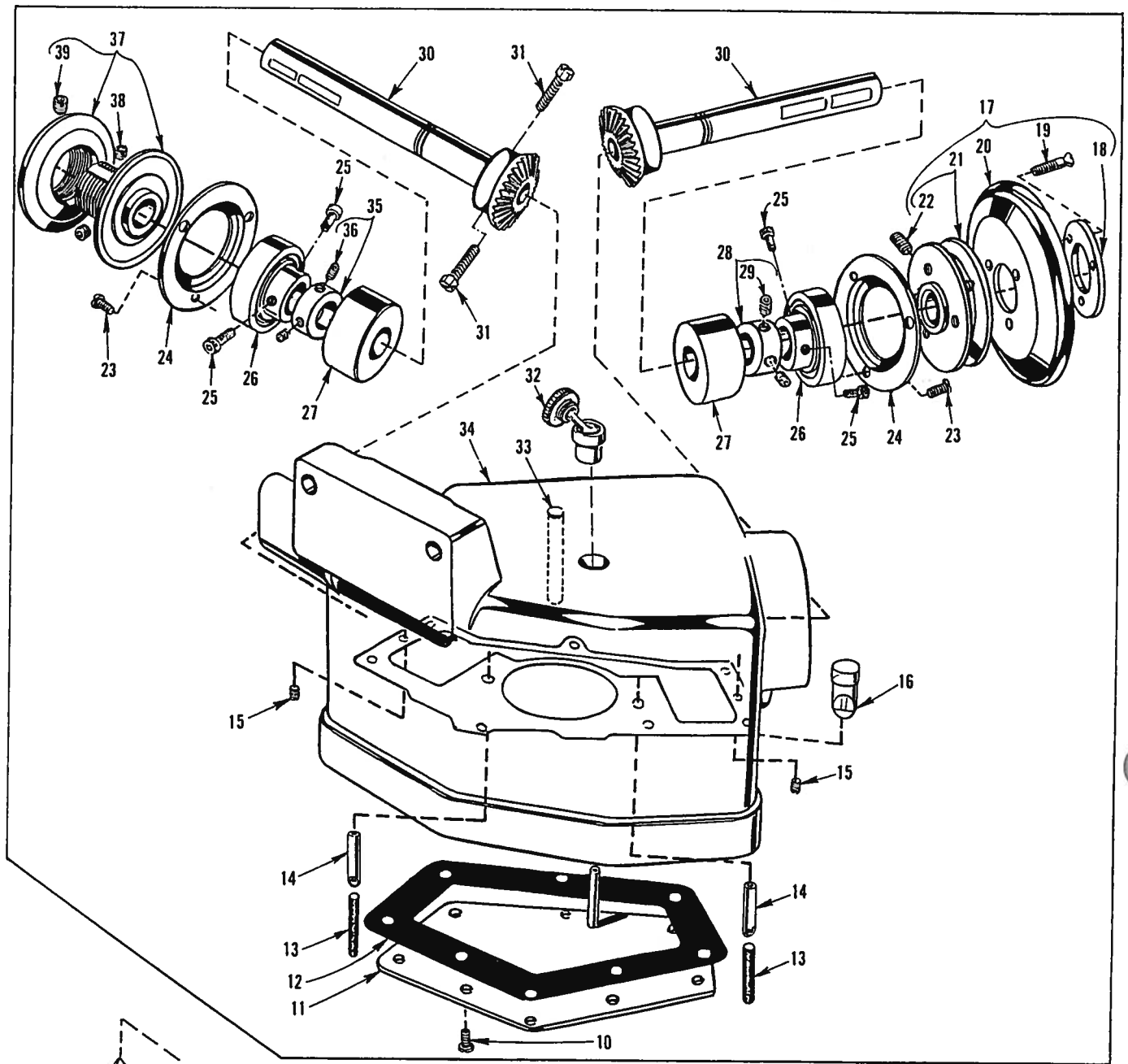


PO39-92

MISCELLANEOUS GAUGES & TAPE REEL PARTS

Ref No.	Part No.	Description	Amt Req
1	21227 CN	Looper Travel Gauge, complete	1
2	21227 CM	Looper Travel Gauge Pointer	1
3	21227 CS	Looper Travel Gauge Plate	1
4	21388 AZ	Wrench, for 36236G driving link stud	1
5	21227 CU	Looper Alignment Gauge	1
6	21227 BU	Needle Height Gauge, all Styles except 36200 PJ, PM, TJ, TM	1
-	21227 DS	Needle Height Gauge, Styles 36200PJ, PM, TJ, TM .	1
7	21225 F-3/16	Looper Gauge, all Styles	1
8	21388 Y	Spanner Wrench	1
9	21227 CG	Synchronizing Gauge, looper and needle timing, complete	1
10	21227 CK	Synchronizing Gauge Rod	1
11	21227 CJ	Looper Clamp and Height Gauge	1
12	22738	Screw	1
13	22703 A	Screw	1
14	21227 CH	Needle Setting Block	1
15	14087	Thumbscrew	1
16	1347 A	Nut	1
17	TT-85	Wrench, for 3/16" square nut on 35851K	1
18	21227 BV	Looper Avoid Gauge	1
19	21227 CV	Cover Thread Hook Gauge	1
* 20	23279 D	Folder Threader	1
* 21	753	Adjustable Axle Cone	1
* 22	188 D	Screw, for adjustable axle cone	1
* 23	51292 F-8	Spring, tape holder disc	1
* 24	21178	Tape Holder Disc	2
* 25	88	Screw, collar	1
* 26	161	Collar	1
* 27	21114 W	Tape Reel Axle	1
* 28	258 A	Nut, tape reel axle	1
* 29	21171 Z	Tape Reel Frame	1
* 30	22729 A	Screw, tape reel frame	2
* 31	21171 AA	Tape Guide	1
* 32	23401 P-7/16	Tape Folder	1
* 33	357	Screw, tape folder	2
* 34	28	Screw, tape guide	1
* 35	36279 E	Frame Chip Guard	1

* Indicates tape holder parts for Styles 36200 PX and TX only.



DRIVE UNIT, BELT GUARD & TABLE MOUNTING PARTS

Ref. No.	Part No.	Description	Amt. Req.
1	35895 R	Mounting Stud	3
2	21371 UE	Washer	6
3	660-275	Neoprene Isolator	6
4	660-161	Felt Isolator	9
5	651 B-24	Nut	6
6	36295 J	Belt Guard	1
7	25 S	Screw, belt guard	2
8	22652 F-20	Screw	2
* 9	29480 CK	Auxiliary Support and Drive, complete	1
10	22569 C	Screw, bottom cover	8
11	36295 Z	Bottom Cover	1
12	36295 AA	Gasket	1
13	666-128	Oil Wick	2
14	36293 A	Oil Tube	2
15	22571 A	Plug Screw	2
16	51-120 BLK	Oil Gauge	1
17	36295 H	Handwheel Assembly	1
18	61321 L	Spacer Plate	1
19	22574	Screw	3
20	61321 J	Handwheel	1
21	36295 F	Pulley	1
22	22894 V	Screw	2
23	22569 C	Screw	6
24	36295 AC	Ball Bearing Cap	2
25	36295 AE	Screw	4
26	660-302	Ball Bearing	2
27	36295 Y	Bushing	2
28	21705	Collar	1
29	22894 C	Screw	2
30	36295 W	Gear Shaft	2
31	22882 A	Screw	2
32	666-96	Oil Filler Plug	1
33	36295 AB	Gear Locating Pin	1
34	36295 V	Machine Support	1
35	21705	Collar	1
36	22894 C	Screw	2
37	36295 G	Variable Speed Pulley	1
38	22878	Screw	2
39	22650 AE-4	Socket Set Screw	1
* 39	35829 AE	Auxiliary Support and Drive, not shown	1

* These items available at extra send charge for Styles 36200 TA, TH, TJ, TM, TX.

NUMERICAL INDEX OF PARTS

Part No.	Page No.	Part No.	Page No.	Part No.	Page No.
18	23, 25, 27, 29	660-302	45	22564 B	11, 13
20	29	660-311	29	22564 D	29
CL21	11, 13	661-150	33	22565 A	15, 35, 37
22 KH	11, 31	664 F-16	21	22569 B	11
25 S	45	666-96	11, 45	22569 C	45
28	21, 43	666-128	45	22569 D	13, 17
28 A	21	667 D-16	31	22571 A	31, 45
28 C	13	753	43	22571 B	15
36 G	27	1096 B	27, 29	22571 E	33
50-537 BLK	11	1347 A	43	22572 B	29
51-15 BLK	33	4761	27, 29	22574	45
51-120 BLK	45	6042 A	11, 21, 25	22578 H	23
73 A	11, 13, 31	12538	21	22580	15
73 C	11	12865	29	22585	27
77	17, 25, 29	12934 A	11, 27	22585 A	15, 29
TT-85	43	14087	43	22585 C	19, 21, 31
86	19	15037 A	29	22587 B	17
87 A	33	21101 S-7	41	22587 E	15, 23, 25
J87 J	33	21114 W	43	22587 H	23
87 U	23	21171 Z	43	22593	13
88	29, 43	21171 AA	43	22596	33
90	11, 15	21178	43	22596 D	31
93	11	21225 F-3/16	43	22650 AE-4	17, 45
93 A	11	21227 BU	43	22651 CD-5	41
94	19, 35, 37	21227 BV	43	22652 A	19
97 A	27	21227 CG	43	22652 A-6	29
98 A	31	21227 CH	43	22652 F-20	45
109	19	21227 CJ	43	22653 B-8	21
150	35, 37	21227 CK	43	22653 E-20	31
161	43	21227 CM	43	22703 A	43
188 D	43	21227 CS	43	22711	11, 25
255	19	21227 CU	43	22716 A	31, 37
258	25	21227 CV	43	22729	17
258 A	19, 29, 43	21227 DS	43	22729 A	43
269	23, 25, 27, 29	21233 AJ	41	22729 C	23, 25, 27, 29
318	21	21233 KS	41	22729 D	29
357	43	21371 UE	45	22729 M	27
531	31, 33	21388 Y	43	22731	35, 37
538	33	21388 AZ	43	22733 B	13
604	29	21705	45	22738	43
605 A	27	21756 G	15	22738 C	21
651 B-24	45	22504 C	25	22738 F	31
652 C-9	29	22513	21	22738 G	35, 37
652 K-24	33	22516 A	11	22738 H	21
660-161	45	22517	19	22738 P	35, 37
660-202	15, 17, 27	22519	19	22747	23, 29
660-206	13, 25	22519 F	15	22759 A	11
660-207	15, 25	22524	21	22766	17, 33
660-215	29	22528	23	22767 A	27
660-219 D	27	22539 G	11	22768 B	13
660-219 P	15	22539 M	11	22777 B	21
660-220	33	22539 T	13	22784 F	19
660-221	29	22539 W	33	22791 D	13
660-254 C	19	22560 A	21, 33	22791 E	33
660-261	21	22562 A	17, 31, 35, 37	22795 B	29
660-275	45	22564	17	22797	17

NUMERICAL INDEX OF PARTS

Part No.	Page No.	Part No.	Page No.	Part No.	Page No.
22798	31	35851 L	29	36224 H	31
22799 B	13	35851 M	25	36224 K	31
22799 N	27	35859 D	21	C36224 A	31
22801	15,31	35859 J	21	C36224 J	31
22829	13	35861 D	15	36225	23
22839	11	35862	17	36226 A	23
22839 D	19	35866	25	36226 B	23
22845 M	23	35876 U	31	36226 H	23
22849	31,33	35880 M	21	36226 J	23
22878	45	35883 G	33	36229 B	21
22881 A	21	35883 V	31	36230 C	35,37
22882 A	45	35884 D	33	36230 D	35,37
22894 C	45	35884 K	31	36230 G	35
22894 J	15,21	35887 M	11	36230 J	35
22894 K	15	35887 R	11	36230 P	35,37
22894 V	45	35887 V	13	36230 R	37
22894 W	15,23,25,33	35887 X	11	36230 S	37
22894 X	17,27	35887 Z	13	36230 V	37
22894 AM	15,17	35887 AD	11	36231 AD	39
23279 D	43	35887 AE	11	36231 AE	39
23401 P-7/16	43	35888 N	11	36231 AF	39
23420 DB	31	35888 R	11	36231 AG	39
23423 X	31	35889 H	11	36231 AH	35,39
23423 Z	31	35890 E	13	36231 AJ	39
29101 J	15,25	35894 J	15	36231 AK	39
29103 T	15,23	35894 L	15	36231 AL	35,39
29472 Y	15	35895 R	45	36231 AM	37,39
29472 AC	15	35895 X	15	36231 AP	37,39
29478 CS	23	35895 Y	15,17	36232 AD	39
29478 CT	25	35897 BU	15	36232 AE	39
29478 CU	29	35897 BV	15	36232 AF	39
29478 CZ	33	35897 BW	15	36232 AG	39
29478 DM	25	35897 BY	17	36232 AH	35,39
29478 DR	29	36203	31	36232 AJ	39
29480 CK	45	36204	11	36232 AK	39
33174 B	23	36205 A	23	36232 AL	35,39
35751 G	29	36205 B	23	36232 AM	37,39
35760 D	13	36205 H	23	36232 AP	37,39
35761 D	13	36205 J	23	36234 C	23
35763	17	36208 A	29	36234 D	23
35763 F	17	36210	29	36234 E	23
35763 G	17	36218	21	36234 F	23
35766 B	25	36218 J	21	36234 G	23
35767	21	36220 A	35	36236	25
35781 D	13	36220 B	35	36236 A	25
35792	19	36220 H	37	36236 B	25
35792 T	19	36220 K	35	36236 C	25
35815 A	17	36220 L	35	36236 E	23
35817 E	21	36220 M	37	36236 F	23
35829 AE	45	36220 U	35	36236 G	23
35836 C	25	36221 B	17	36236 H	23,25
35842 J	25	36221 C	17	36236 J	25
35846	25	36222 A	17	36236 K	25
35846 B	25	36222 C	15	36237	25
35860 E	33	36223	15	36237 A	25
35851 K	25	36223 A	15	36237 E	33

NUMERICAL INDEX OF PARTS

Part No.	Page No.	Part No.	Page No.	Part No.	Page No.
36237 F	33	36273 C	27	36290 B	13
36237 H	33	36273 D	27	36292 K	19
36237 J	33	36273 F	27	36292 M	19
36237 K	33	36273 G	27	36292 N	19
36238	33	36273 J	27	36292 P	19
36238 E	33	36273 K	27	36293 A	45
36240	31	36273 M	27	36293 B	11
36240 J	31	36273 N	27	36293 E	11
36244	23	36278 A	21	36293 G	33
36244 A	23	36278 C	29	36294 A	33
36248	29	36278 F	21	36294 B	21
36249	29	36278 H	21, 27	36294 C	21
36249 A	33	36278 J	27	36295 F	45
36249 B	29	36278 K	21	36295 G	45
36250	35, 37	36278 L	21	36295 H	45
36250 B	35, 37	36278 M	21	36295 J	45
36250 G	35, 37	36279 A	21	36295 V	45
36251 B	27	36279 B	21	36295 W	45
36251 C	27	36279 C	35, 37	36295 Y	45
36251 D	21	36279 D	35	36295 Z	45
36251 E	35, 37	36279 E	21, 43	36295 AA	45
36251 F	35, 37	36279 G	21	36295 AB	45
36251 G	35, 37	36279 H	35	36295 AC	45
36251 H	35, 37	36279 J	21	36295 AE	45
36251 J	35, 37	36280 A	19	36296 A	31
36251 K	31, 35, 37	36280 C	19	36296 B	31
36251 L	35, 37	36280 D	19	36297 J	15
36251 M	17	36280 J	21	36297 M	15
36251 N	17	36280 N	19	36298 F	19
36251 P	27	36280 S	19	36298 G	19
36251 V	27	36280 T	19	39145 A	29
36251 W	35, 37	36280 U	19	39592 AK	19
36251 FA	35, 37	36280 V	19	39593 C	11
36253 A	29	36280 W	19	41071 G	11, 15
36253 B	29	36281 A	13	41255 B	23, 29
36253 G	29	36282	33	43246	25
36253 H	29	36283 B	31	C50092 S	19
36253 J	29	36283 C	31	51054	17
36256	11	36283 E	31	51254 J	17
36256 A	11	36283 G	31	51259	21
36256 B	33	36283 H	31	51292 F-2	19
36260	13	36283 J	31	51292 F-4	19
36261	27	36283 K	33	51292 F-5	19
36261 A	15	36284	31	51292 F-8	43
36263	17	36284 C	33	52336	29
36264 B	21	36284 E	31	52841 H	27
36264 D	17	36284 F	33	52848 B	27
36264 E	21	36286	33	52848 C	27
36264 F	21	36286 A	33	52958 C	11
36270	27	36289	21	52958 F	11
36271	13	36289 A	21	56341 F	25
36271 A	13	36289 B	21	56354 A	17
36271 E	13	36289 D	21	56390 E	11
36271 G	13	36289 E	21	56392 F	19
36271 H	13	36290	11	60078 Z	33
36273 A	27	36290 A	13	61321 J	45

NUMERICAL INDEX OF PARTS

Part No.	Page No.
61321 L	45
62238 A	23,25
62271 B	13
80265	15



Union Special

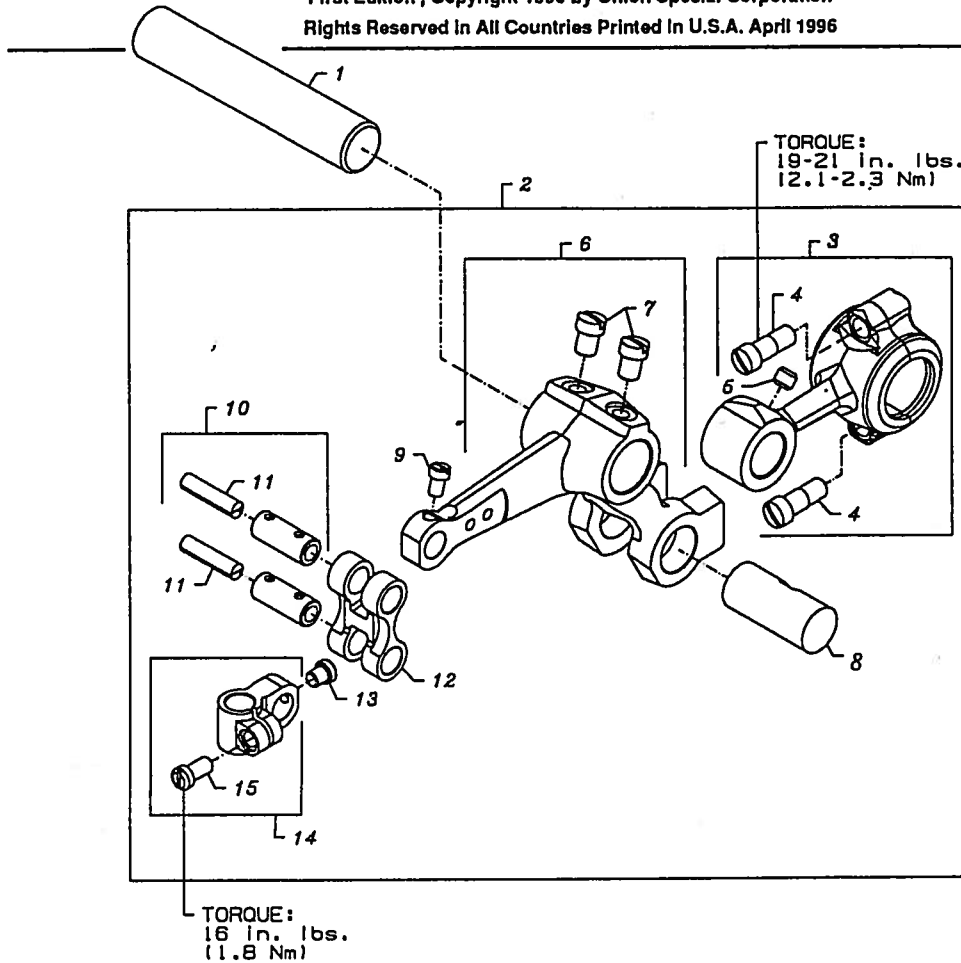
INDUSTRIAL SEWING EQUIPMENT

ILLUSTRATED PARTS SUPPLEMENT PT9611

Supplement to 35800 & 36200 Class

First Edition, Copyright 1996 by Union Special Corporation

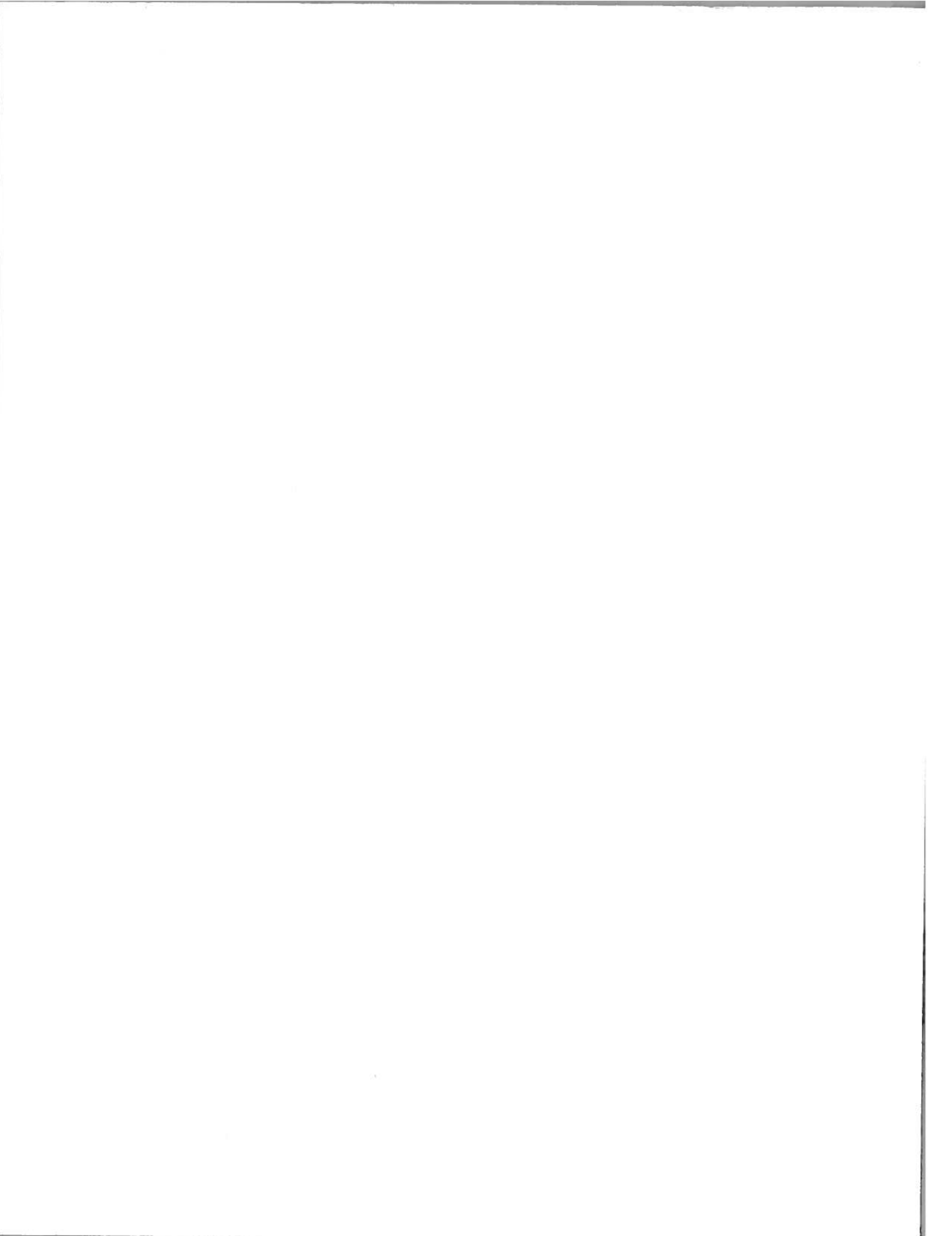
Rights Reserved in All Countries Printed in U.S.A. April 1996

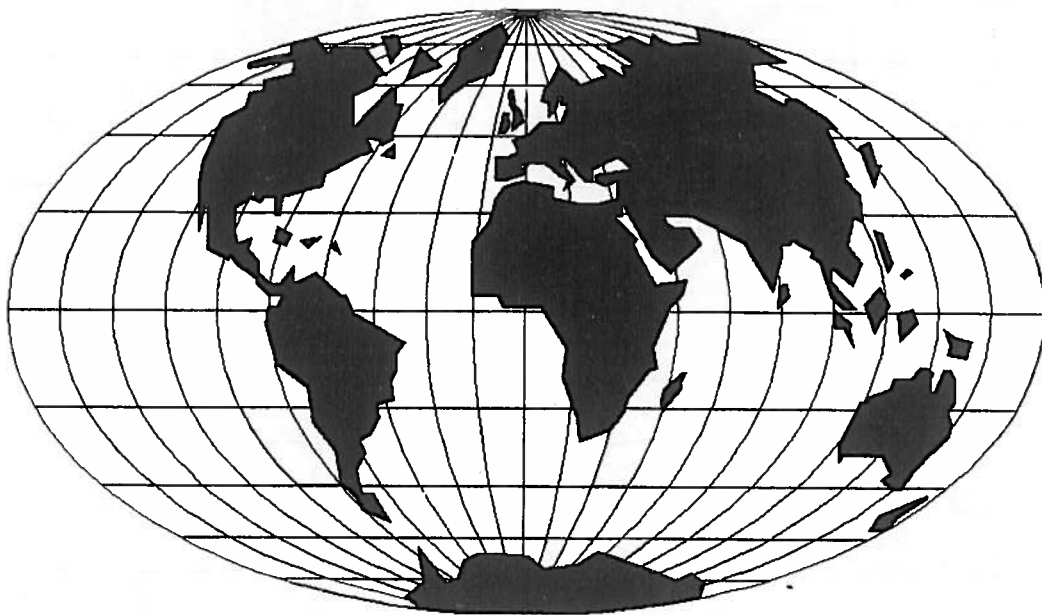


NEEDLE LEVER ASSEMBLY

Ref. No.	Part No.	Description	Amt. Req.
1.	35761	Needle Lever Shaft	1
2.	29348BE	Needle Lever & Connection Rod Assembly	1
3.	35862A	Needle Lever Connection Rod	1
4.	22578B	Screw	2
5.	22894W	Screw	1
6.	35815C	Needle Lever	1
7.	22596	Screw	2
8.	35847X	Needle Lever Connection Pin	1
9.	77	Screw	1
10.	51054A	Link Pin, straight	2
11.	666-149	1/8 Felt Wick	2
12.	56354D	Needle Lever Link	1
13.	22564	Screw	1
14.	51254K	Needle Bar Connection	1
15.	22562A	Screw	1







WORLDWIDE SALES AND SERVICE

Union Special Corporation maintains sales and service facilities throughout the world. These offices will aid you in the selection of the right sewing equipment for your particular operation. Union Special Corporation representatives and service technicians are factory trained and are able to serve your needs promptly and efficiently. Whatever your location, there is a qualified representative to serve you.

Corporate Office: One Union Special Plaza
Huntley, IL 60142
Phone: 847•669•5101
Fax: 847•669•4454

European Distribution Center: Union Special GmbH
Raiffeisenstrasse 3
D-71696 Möglingen, Germany
Tel: 49•07141•247•0
Fax: 49•7141•247•100

Brussels, Belgium
Charlotte, N.C.
El Paso, TX
Hong Kong, China
Huntley, IL
Leicester, England
Lille, France
Miami, FL
Milan, Italy
Möglingen, Germany
Montreal, Quebec
Osaka, Japan
Santa Fe Springs, CA

Other Representatives throughout
all parts of the world.



Union Special
INDUSTRIAL SEWING EQUIPMENT